



INSTRUCTION SHEET 07152

Part #: 9283, 9284, 9285, 920E
Description: Hurricane Mulch Kit Install
Date: 2/27/2008

Instructions for Installing the Hurricane Mulch Kit on Velocity Plus Cutter Decks

1. Prepare the machine so there is easy and safe access to the work area. Remove the ignition key and disconnect the spark plug wires. Maintain all safety related work procedures. Always wear eye and hand protection when working with or near cutter blades.
2. Block the rear wheels and apply the parking brake. Lift the front of the machine for easy and safe access to the bottom of the cutter deck.
3. Using a Blade Buddy, remove the original cutter blades from the cutter deck. To remove the cutter blade, slide the Blade Buddy onto the cutter blade until it stops. Rotate the cutter blade counter-clockwise until the Blade Buddy firmly contacts the cutter deck shell. Remove the cutter blade retainer bolt, and remove the cutter blade.



WARNING

DO NOT OPERATE WITHOUT DISCHARGE CHUTE, MULCHING KIT, OR ENTIRE GRASS CATCHER INSTALLED

4. Remove the existing Turbo Baffle from the discharge side and the discharge chute from the cutter deck. Retain the mounting hardware, discharge baffle, and discharge chute for reinstallation when the mulch kit is removed.
5. Remove two of the spindle mounting bolts as shown in Figure 2, Page 3. Install the Hurricane Baffles as shown in Figure 2, Page 3 and secure using the new spindle hardware supplied with this kit (5/16-18 x 1-3/4" grade 8 bolt, 5/16" lock washer, 5/16-18 elastic stop nut).
6. Remove the Custom-Cut Baffle and hardware from the cutter deck. Do not discard the Custom-Cut Baffle or mounting hardware as it will be reinstalled when the mulch kit has been removed.
7. Install the discharge shutoff baffle to the cutter deck using the hardware provided as shown in Figure 1, Page 2.

8. Install the L.H. and R.H. Mulch Baffles to the front baffle as shown in Figure 3, Page 3 and secure using 3/18-16 x 1" carriage bolts, 3/8" flatwashers and 3/8-16 elastic stop nuts. Do not tighten the hardware at this time.
9. Install the L.H. and R.H. Baffle Mulch Divider(s) to the cutter deck as shown in Figure 3, Page 3 and secure using 3/8-16 x 1" carriage bolts, 3/8" flatwashers and 3/8-16 elastic stop nuts. Do not tighten the hardware at this time.
10. Install the Center Mulch Baffle as shown in Figure 3, Page 3.
11. Tighten all hardware.
12. Install the Eliminator Mulch Blades and secure.
13. Carefully rotate the blades to make sure that contact is not being made between the cutter blades and the mulch baffles. Adjust as needed.
14. Test machine for proper operation.
15. When the Mulch Kit is removed, the side discharge chute, Turbo Baffle and Custom-Cut Baffle must be reinstalled before operation.

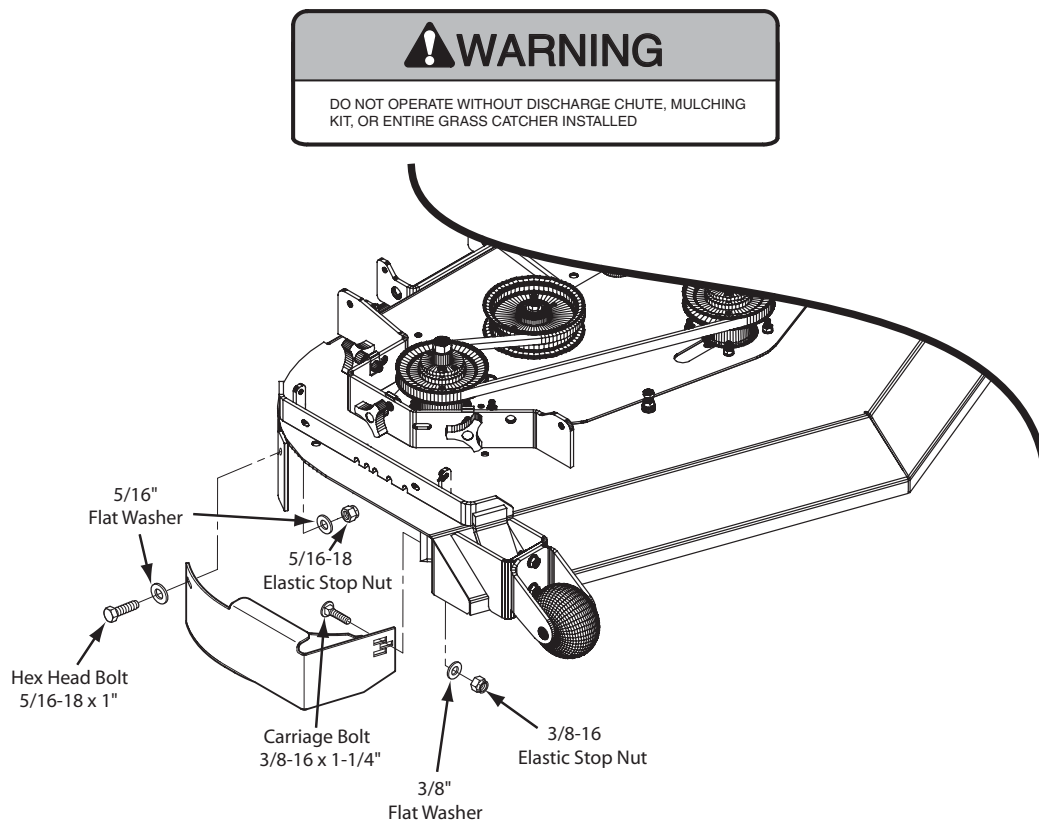
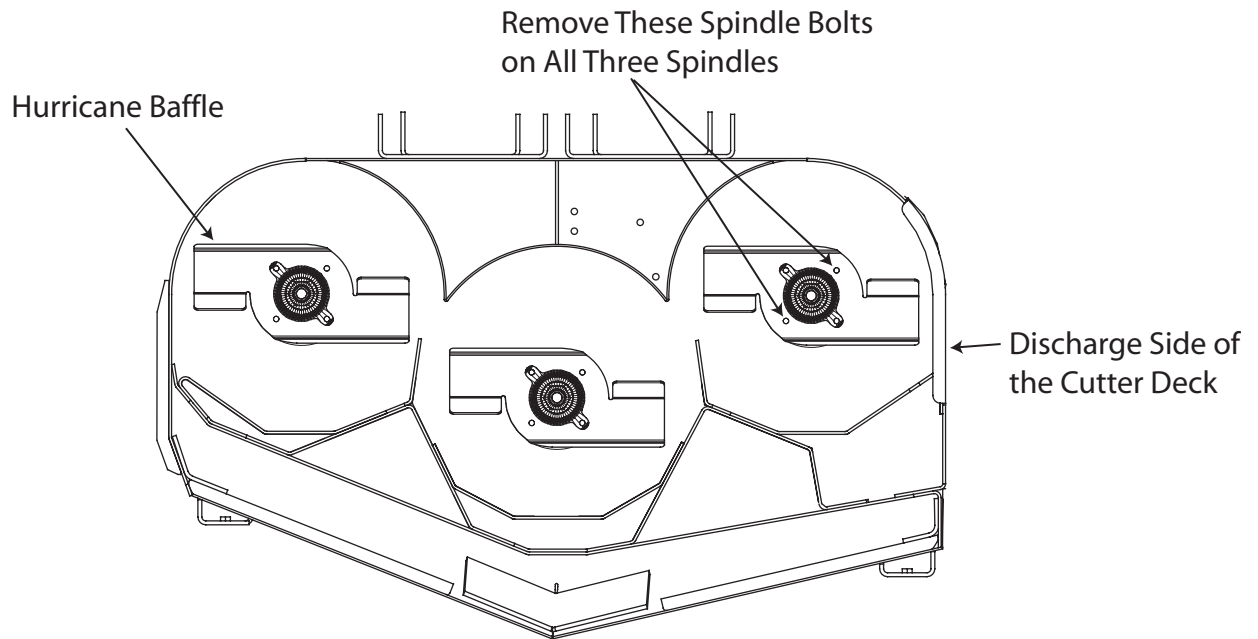


Figure 1. Discharge Shutoff Baffle Installation



*View from the bottom of the cutter deck

Figure 2. Hurricane Baffle Installation

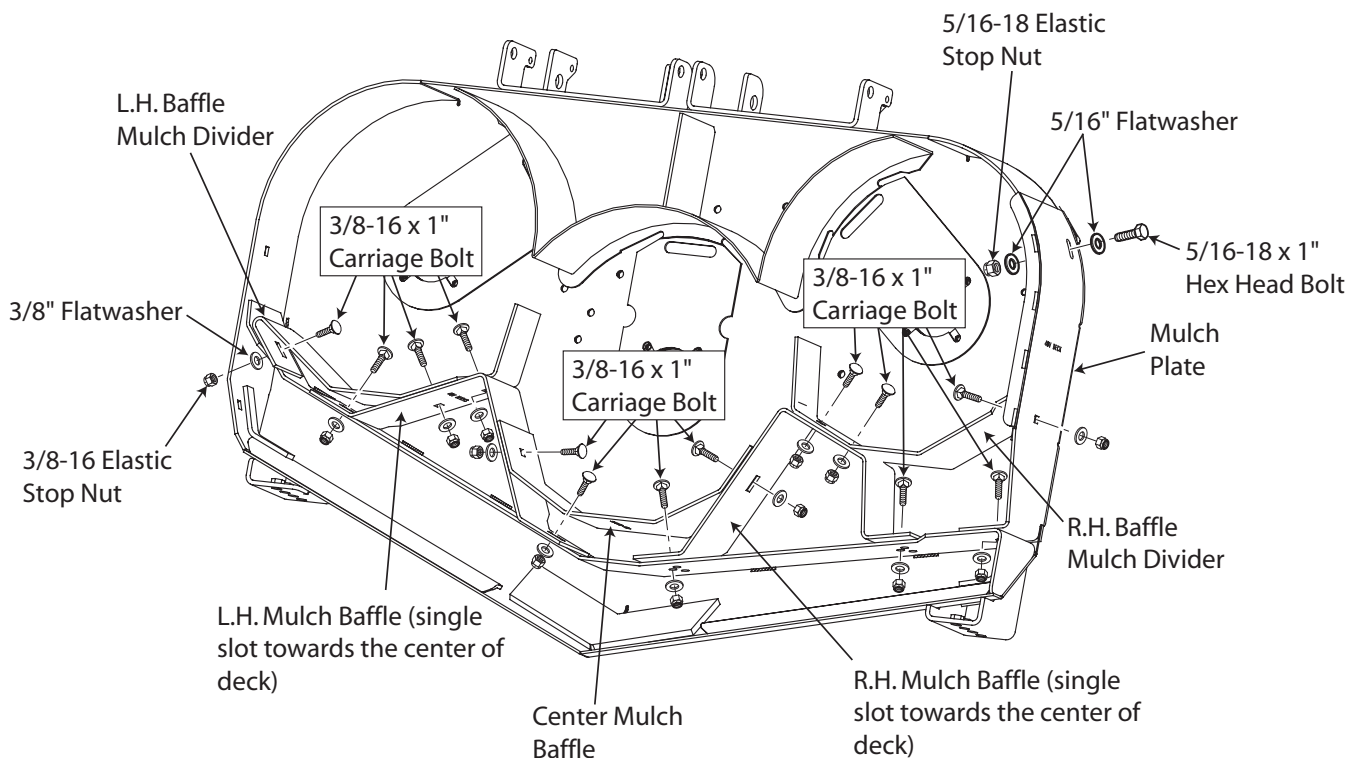


Figure 3. Baffle Installation