



INSTRUCTION SHEET 07175

Part #: 925G, 9293, 9294 & 920T
Description: Hurricane Mulch Kit Installation
Date: 11/17/2021 - Revised

Instructions for Installing the Hurricane Mulch Kit on Scag SFZ, SFZP, SPZ, SZL & SWZT 42, 48", 52" & 61" Cutter Decks

- NOTE -

The following tools are required for installation of this Mulch Kit

- 2 - 1/2" Wrenches or Sockets*
- 1 - 9/16" Wrench or Socket*
- 1 - 15/16" Box Wrench or Socket*
- 1 - 1" Open End Wrench*

The mulch baffles used on the 61" cutter deck are slightly different than shown in the following illustrations.

1. Prepare the machine so there is easy and safe access to the work area. Remove the ignition key and disconnect the spark plug wires. Maintain all safety related work procedures. Always wear eye and hand protection when working with or near cutter blades.
2. Block the rear wheels and apply the parking brake. Lift the front of the machine for easy and safe access to the bottom of the cutter deck.
3. Remove the original cutter blades from the cutter deck. To remove the cutter blades from the spindles install a 1" open end wrench on to the flats provided on the spindle shaft. This will allow you to hold the spindle in place and prevent it from rotating as you remove the blade mounting bolt. Use a 15/16" box wrench or socket to remove the blade mounting bolt. Be sure to retain the bolts, lockwashers and flatwashers. This hardware will be needed when installing the mulching blades in step number 12. See Figure 1.

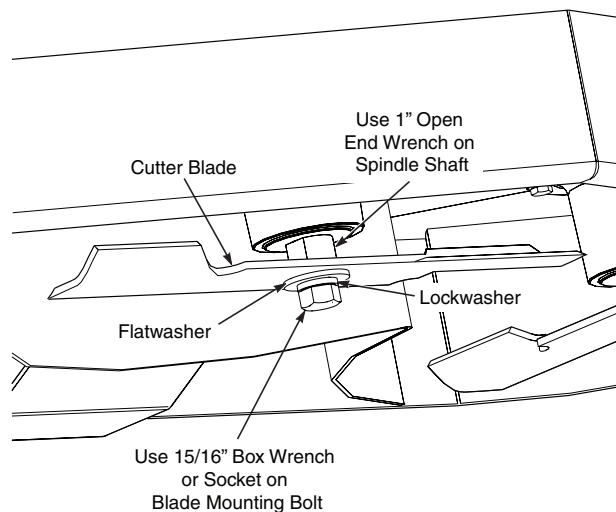


Figure 1. Blade Removal



WARNING

Blades have a sharp cutting edge. Wear proper eye protection and protective gloves or wrap blades with protective material when removing, sharpening and installing blades.

4. For 42" cutter decks, proceed to Step 6. Hurricane Mulch Baffles are not used on 42" cutter decks.
5. Remove two of the spindle mounting bolts from each of the spindle flanges as indicated in Figure 2. Install the L.H. and R.H. Hurricane Mulch Baffles as shown and secure using the new hardware supplied with this kit (5/16-18 x 1-1/2" grade 8 hex head bolts, 5/16" lockwashers and 5/16-18 elastic locknuts). Install and secure the Center Hurricane Baffle with the new hardware provided (5/16-18 x 1-1/2" grade 8 hex head bolt,

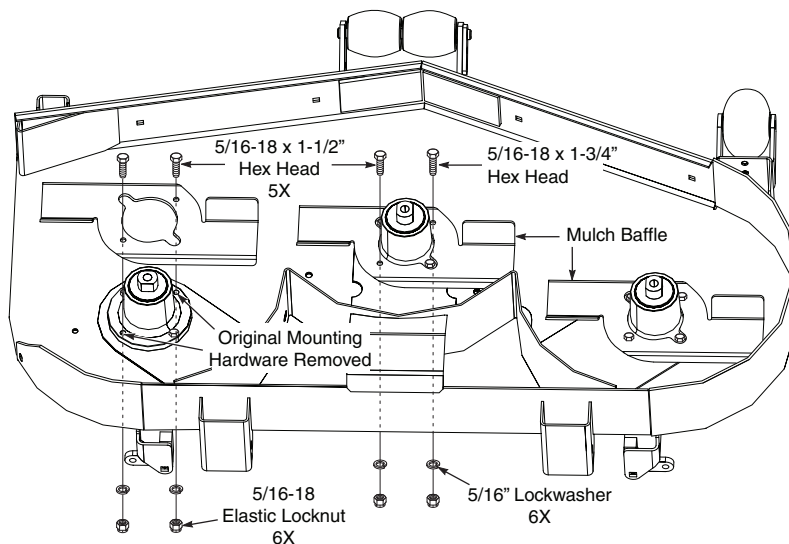


Figure 2. Hurricane Mulch Baffle Installation

6. Install the L.H. Mulch Baffle to the cutter deck as shown and secure using 3/8-16 x 1" carriage bolts, 3/8" flatwashers and 3/8-16 elastic locknuts. Do not tighten the hardware at this time. See Figure 3.
7. Install the L.H. Divider Plate to the Mulch Baffle as shown and secure using 3/8-16 x 1" carriage bolts, 3/8" flatwashers and 3/8-16 elastic locknuts. Do not tighten the hardware at this time. See Figure 3.

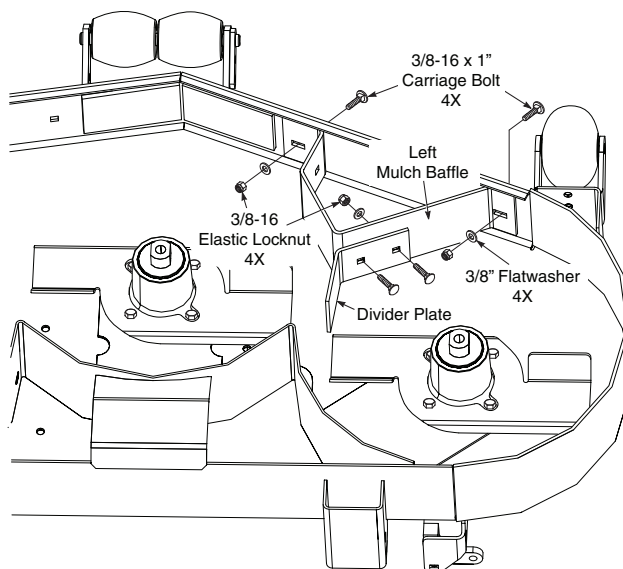


Figure 3. L.H. Mulch Baffle & Divider Plate Installation

8. Install the R.H. Mulch Baffle to the cutter deck as shown and secure using one 3/8-16 x 1" carriage bolt, 3/8" flatwasher and 3/8-16 elastic locknut. Do not tighten the hardware at this time. See Figure 4.

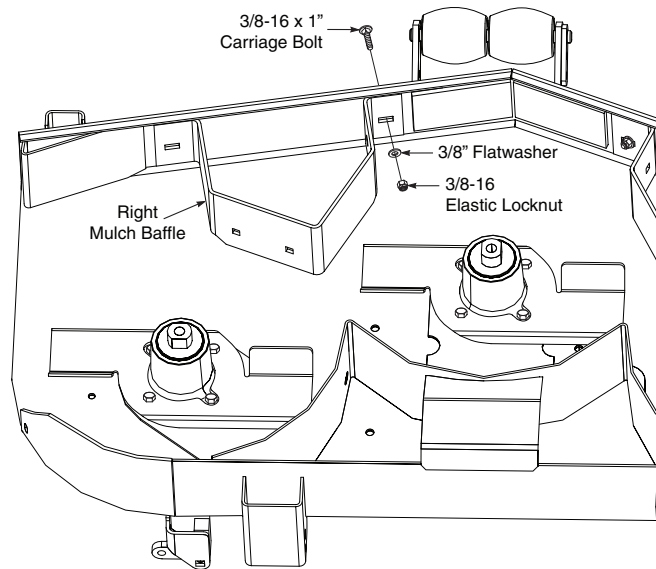


Figure 4. R.H. Mulch Baffle Installation

9. Install the Discharge Shut-Off Baffle to the cutter deck and secure using the hardware provided as shown in Figure 5. Do not tighten the hardware at this time.

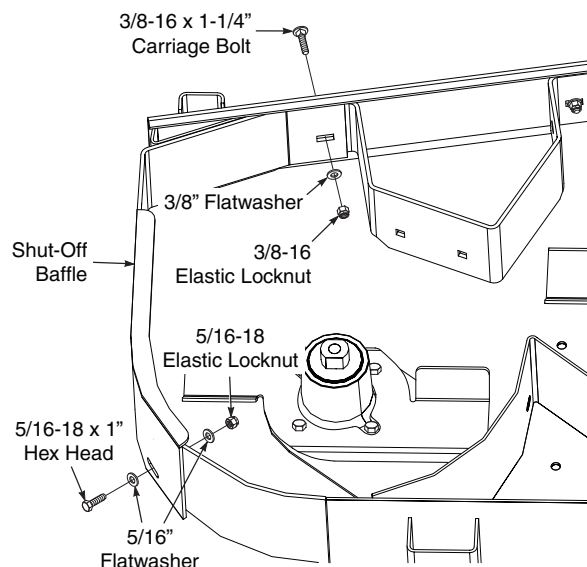


Figure 5. Discharge Shut-Off Baffle Installation

10. Install the R.H. Divider Plate to the R.H. Mulch Baffle and Shut-Off Baffle as shown in Figure 6, Page 4. Secure using 3/8-16 x 1" carriage bolts, 3/8" flatwashers and 3/8-16 elastic locknuts. Do not tighten the hardware at this time. See Figure 6.

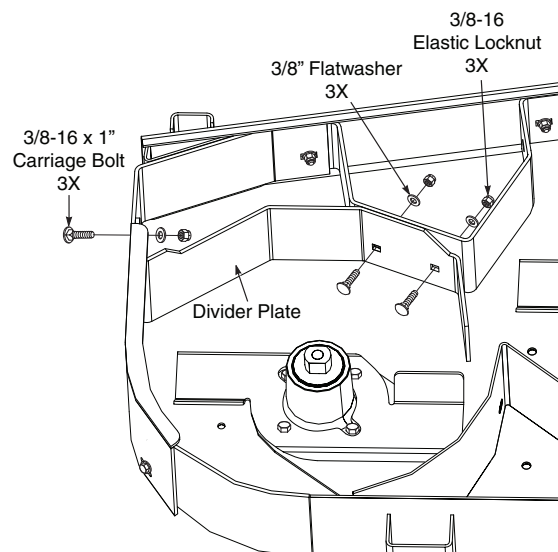


Figure 6. R.H. Divider Plate Installation

11. Install the Center Baffle as shown in Figure 7. Secure using 3/8-16 x 1" carriage bolts, 3/8" flatwashers and 3/8-16 elastic locknuts. Do not tighten the hardware at this time. See Figure 7.

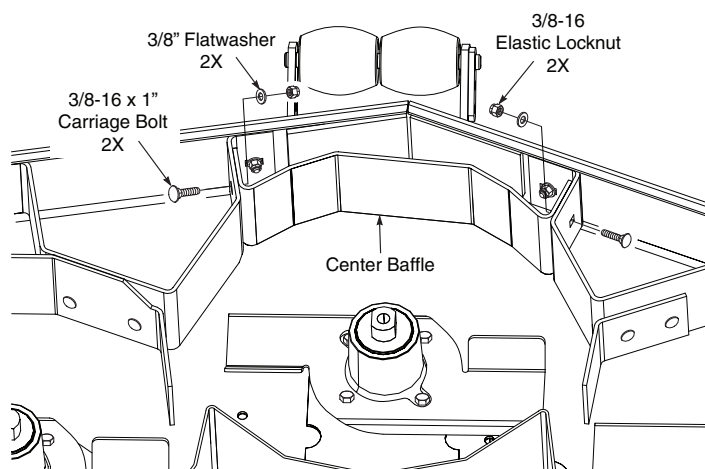


Figure 7. Center Baffle Installation

12. Tighten all hardware.
13. Install the Eliminator Mulch Blades and secure using the blade retainer hardware that was removed in step 3. Torque the blade retainer bolts to 75 Ft. Lbs.
14. Carefully rotate the blades to make sure that contact is not being made between the cutter blades and the mulch baffles. Adjust as needed.
15. Test machine for proper operation.



WARNING

Do Not Operate Without Discharge Chute, Mulch Plate, or Entire Grass Catcher Installed.