



INSTRUCTION SHEET 07177

Part #: 9298, 9299, 920G, 920U
Description: SWZT/SZL/SFZ/SPZ Mulch Plate Install
Date: 3/24/2016 - Revised

Instructions for Installing the Mulch Plate on SWZT/SZL/SFZ & SPZ - 36"/48"/52" & 61" Cutter Decks

- NOTE -

The following tools are required for installation of this Mulch Plate
2 - 1/2" wrenches or sockets
1 - 9/16" wrench or socket

1. Prepare the machine so there is easy and safe access to the work area. Remove the ignition key and disconnect the spark plug wires. Maintain all safety related work procedures. Always wear eye and hand protection when working with or near cutter blades.
2. Block the rear wheels and apply the parking brake. Lift the front of the machine for easy and safe access to the bottom of the cutter deck.

WARNING

Blades have sharp cutting edges. Wear proper eye protection and protective gloves or wrap blades with protective material when working near cutter blades.

3. Install the Mulch Plate Baffle to the cutter deck using the hardware provided with this kit. See Figure 1.

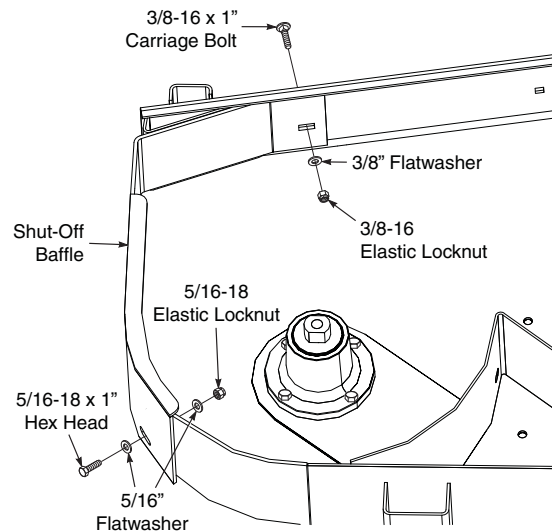


Figure 1. Mulch Plate Baffle Installation

4. Tighten all hardware on Mulch Plate Baffle.
5. Test machine for proper operation.

WARNING

Do Not Operate Without Discharge Chute, Mulch Plate, or Entire Grass Catcher Installed.