



## INSTRUCTION SHEET 07244

Part #: 922U  
Description: Air Filter Indicator  
Date: 10/12/2017

### Instructions for Installation of the #922U Air Filter Indicator

This Accessory is Applicable to;  
STCII, STTII, SCZ & SVRII Models Equipped With  
*"Tiger-Eye"* Advanced Monitoring System & Engines Listed Below

#### Briggs & Stratton

35BV  
37BV-EFI

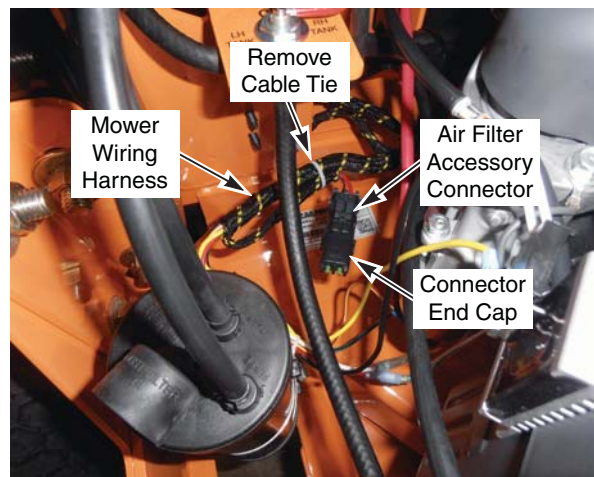
#### Kawasaki

22FX 25FD 26FD-DFI  
23FX 31FD-DFI  
27FX  
31FX

1. Prepare the machine so there is easy and safe access to the work area. Remove the ignition key and disconnect the spark plug wires. Maintain all safety related work procedures. Always wear eye and hand protection.
2. Identify the connector provided in the mower wiring harness for this air cleaner accessory.

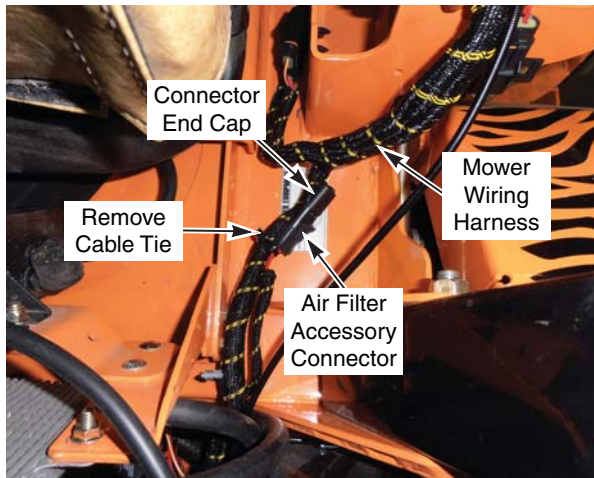
When installing on STTII models, the connector will be located on the RH side of the machine near the control panel. For STCII & SCZ models, the connector will be found on the LH side of the machine in front of the engine. For SVRII machines, the connector is located on the LH side of the machine near the engine.

The connector will be secured to the wiring harness with a cable tie. Free the connector from the wiring harness using a side cutter to carefully cut the cable tie. Remove the connector end cap. See Figure 1A below for STCII & SCZ or Figure 1B, Page 2 for STTII & SVRII.

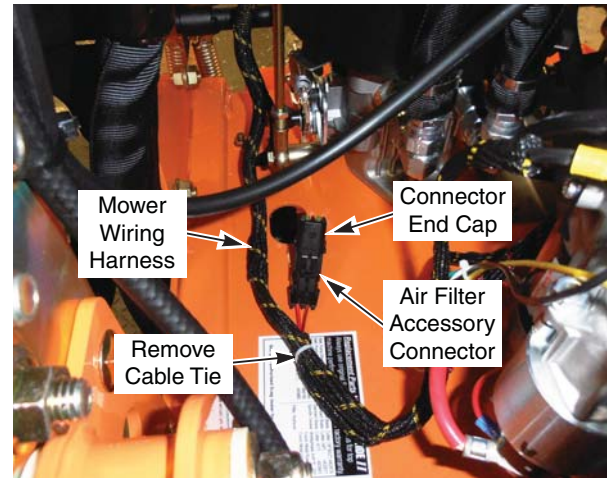


STCII & SCZ

Figure 1A. Locate Connector



**STTII**



**SVRII**

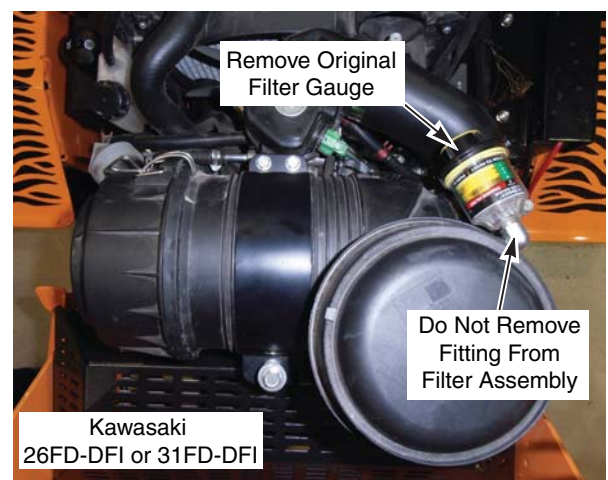
**Figure 1B. Locate Connector**

3. Locate the port provided in the air cleaner assembly identified in Figure 2. Remove the existing plug and install the 90 degree fitting supplied with this kit. Do not overtighten fitting.

**- NOTE -**

*STTII with 26FD-DFI or 31FD-DFI Only*

*STTII models powered by the Kawasaki 26FD-DFI or 31FD-DFI feature an air filter gauge as original equipment. Remove the filter gauge from the existing 90 degree fitting installed in the air filter assembly. Do not remove the 90 degree fitting from the filter assembly. See Figure 2.*



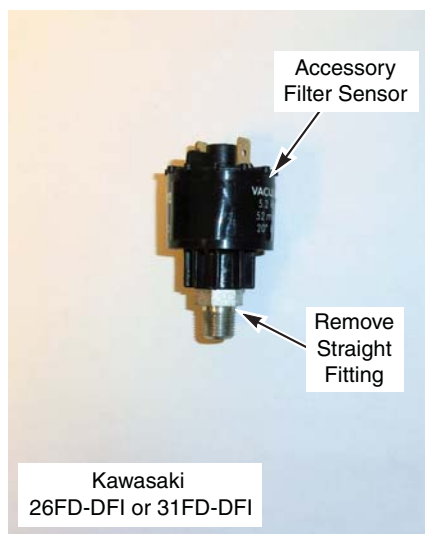
**Figure 2. 90 Degree Fitting**

4. Install the filter sensor supplied with this kit to the 90 degree elbow installed in the previous step.

- NOTE -

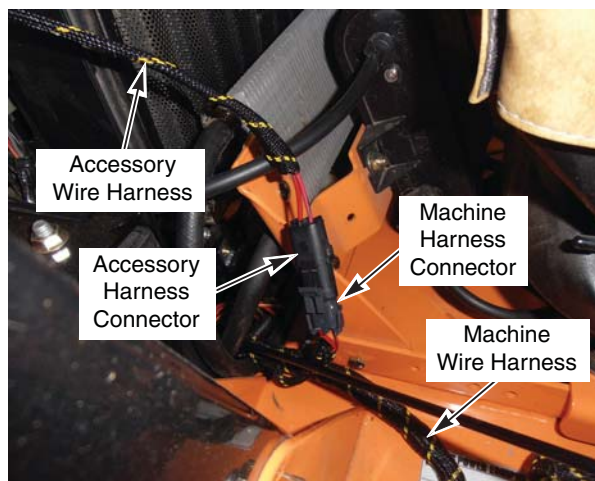
*STTII with 26FD-DFI or 31FD-DFI Only*

*When installing this accessory on STTII models powered by the Kawasaki 26FD-DFI or 31FD-DFI engine it will be necessary to remove the straight fitting installed in the filter sensor supplied with this kit prior to assembling the sensor onto the 90 degree fitting provided in the engine air filter assembly. See Figure 3.*



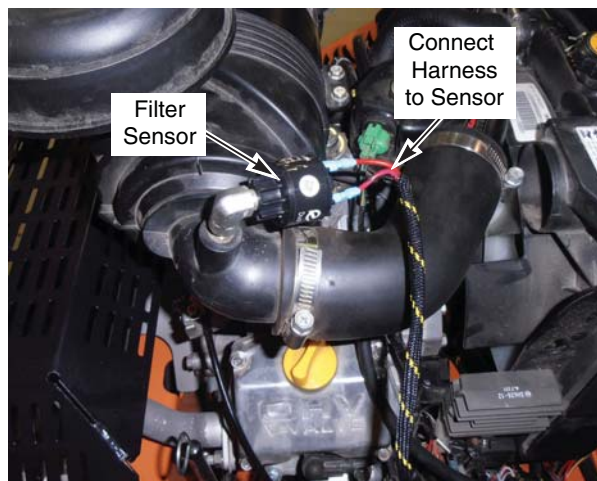
**Figure 3. Remove Fitting - STTII with 26FD-DFI or 31FD-DFI Only**

5. Connect the accessory wire harness provided with this kit into the machine wire harness at the connector identified in step 2. See Figure 4.



**Figure 4. Connect to Main Harness - STTII Shown**

6. Carefully route the accessory wire harness to the filter sensor assembled to the engine air filter in Step 4 and connect. See Figure 5.

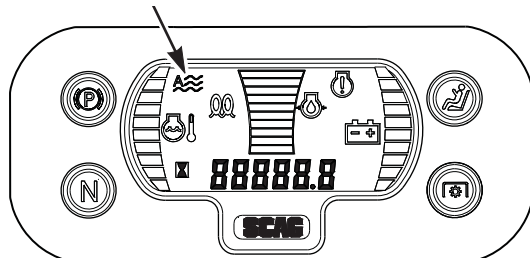


**Figure 5. Connect Harness to Sensor - STII Shown**

7. Using the cable ties provided with this kit, secure the accessory wire harness away from moving or hot components that could cause damage.
8. Reconnect the spark plug wires.



 SERVICE AIR  
FILTER INDICATOR



Service Air Filter Indicator indicates the condition of the engine air filter. Icon will display when it is time to change the air filter.

9. Reference Section 4.1 "Tiger Eye Instrument Identification" of the operators manual supplied with the machine for further details.