



INSTRUCTION SHEET 07302

Part #: 925P, 925R, 925S, 925T, 925V
Description: Hero Deck Blowout Kit
Date: 12/12/2022

Instructions for Installing the Hero Deck Blowout Kit

1. Prepare the machine so there is easy and safe access to the work area. Remove the ignition key and disconnect the spark plug wires. Maintain all safety related work procedures. Always wear eye and hand protection when working with or near cutter blades.
2. Block the rear wheels and apply the parking brake. Lift the front of the machine for easy and safe access to the bottom of the cutter deck.
3. Install the front blowout baffle(s) to the cutter deck as shown. Secure using 3/8-16 x 1" carriage bolts, 3/8", 3/8-16 flanged elastic stop nuts, 5/16-18 carriage bolts and 5/16-18 flanged elastic stop nuts. See Figure 1 (48" deck shown).

-NOTE-

36" cutter deck models have one (1) baffle and will use only 3/8" hardware to secure the baffle to the cutter deck.

4. Tighten all hardware.
5. With caution, carefully lower the machine back onto the floor and return the cutter deck to the transport position.
6. Carefully rotate the blades to make sure that contact is not being made between the cutter blades and the blowout baffle(s).
7. Test machine for proper operation.

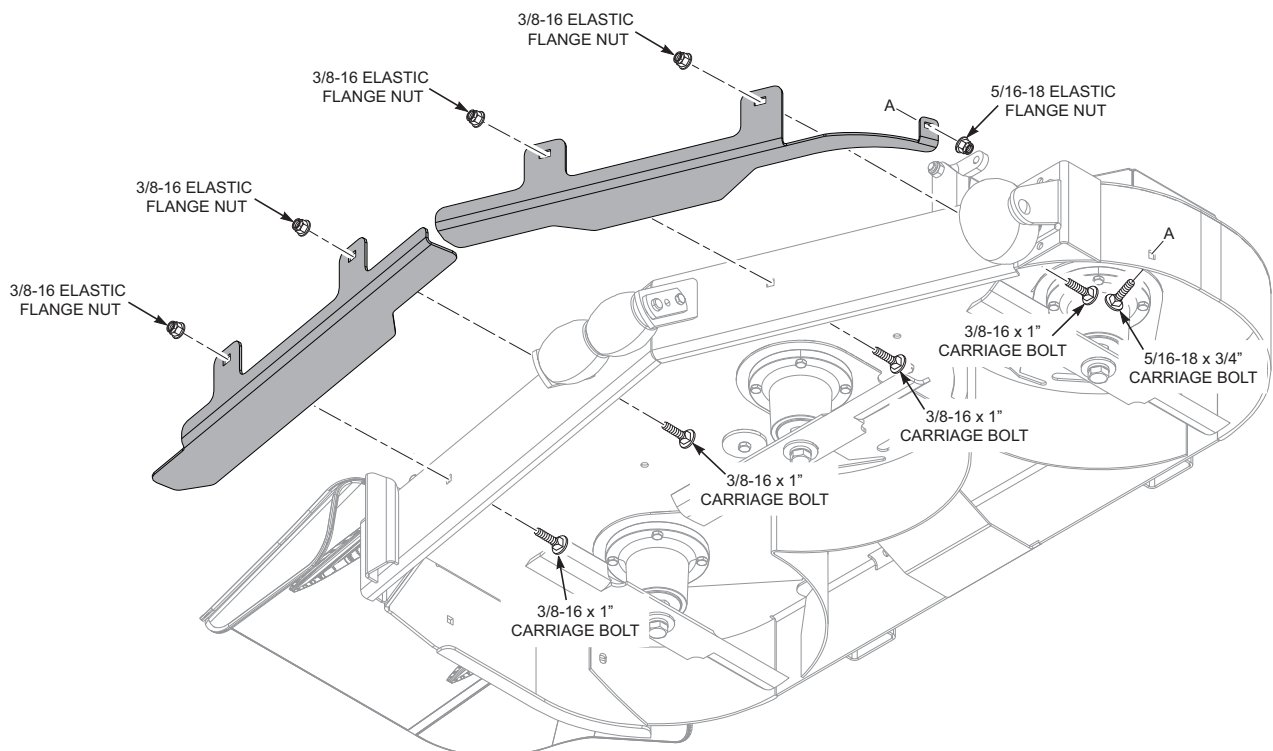


Figure 1