

Part #: 9618  
Description: Windstorm Weight Kit  
Date: 03/25/2022

### Instructions for Installing the Windstorm Weight Kit

1. Prepare the machine so there is easy and safe access to the work area. Maintain all safety related work procedures. Always wear eye and hand protection. Remove the ignition key and disconnect the spark plug wires.
2. With caution, raise the rear of the machine and support the unit providing safe access to the underside of the frame.
3. Remove the left and right rear wheels to allow access to the right and left side plates on the mainframe assembly.
4. If there are existing holes in the side plates as shown in Figure 1, proceed to step 8 otherwise continue to Step 5.

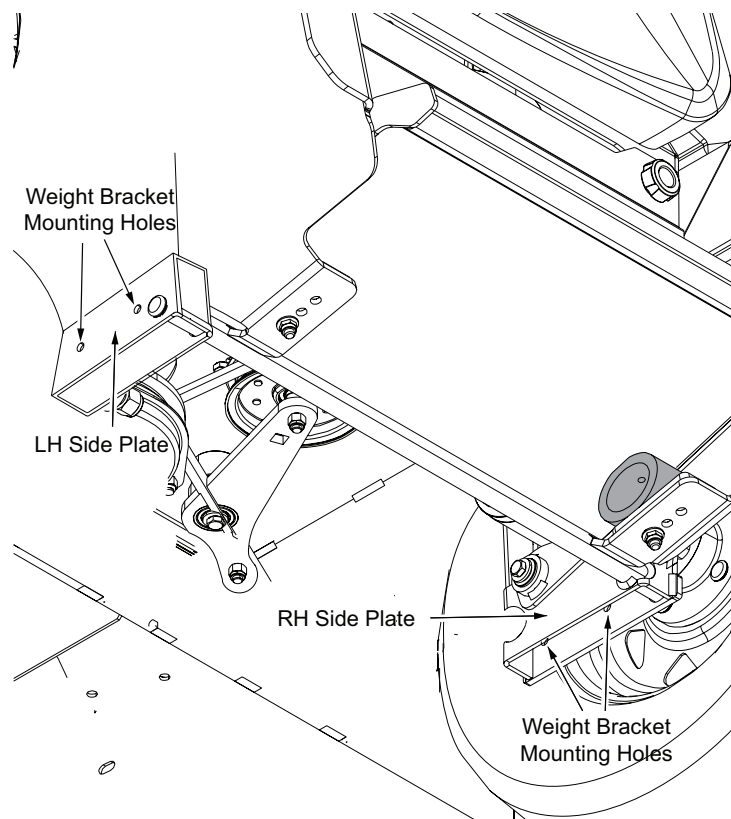


Figure 1.

5. Align the weight mounting bracket flush with the bottom and front of the side plates on the left and right hand sides. See Figure 2 on page 2. Once the bracket is positioned properly with the bottom and front of the side plates, clamp the weight mounting bracket in place.

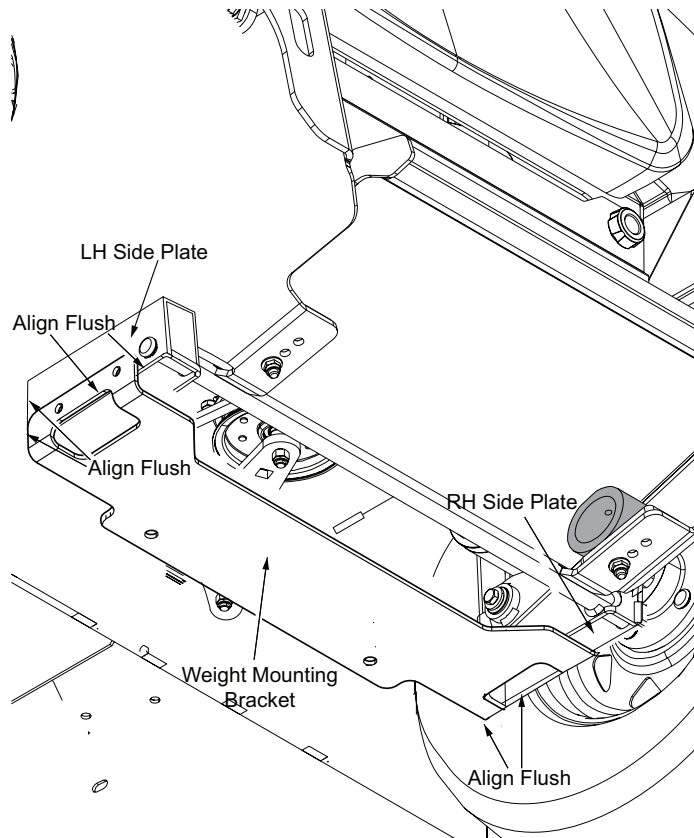


Figure 2.

6. Locate the two mounting holes on the right and left side of the weight mounting bracket. Using a center punch, mark the four holes to be drilled through the side plates.
7. Remove the clamp and bracket from the side plates. Drill a 3/16" pilot hole at each punch mark that was marked in Step 6. Drill out the four pilot holes using a 13/32" drill bit. Be sure to only drill through the first plate.
8. Install the four 3/8 - 16 x 1" hex head bolts included in the kit through the weight mounting bracket and then through the side plates on the right and left side. See Figure 3. Install and tighten the four 3/8" locknuts included in the kit.

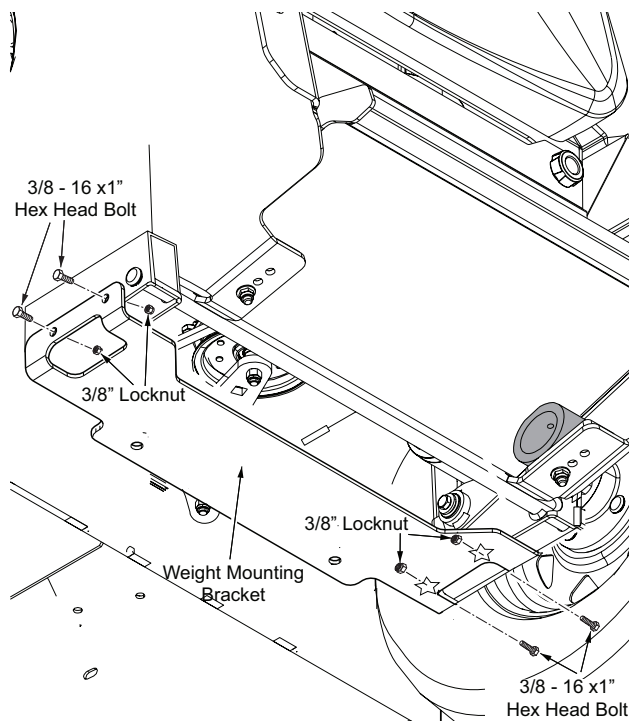


Figure 3.

9. **Caution - The counterweights included in this kit weigh in excess of 35 lbs each. Please have additional assistance available in order to install these parts in a safe manner.**
10. Place each weight on top of the weight mounting bracket. Be sure to align the holes in the two weights with the holes in the weight mounting bracket. See Figure 4.
11. Secure the weights in place by installing the two 1/2 - 13 x 4" hex head bolts included in the kit through the bottom of the weight mounting bracket and then through the weights. Install and tighten the 1/2" locknuts. See Figure 4.

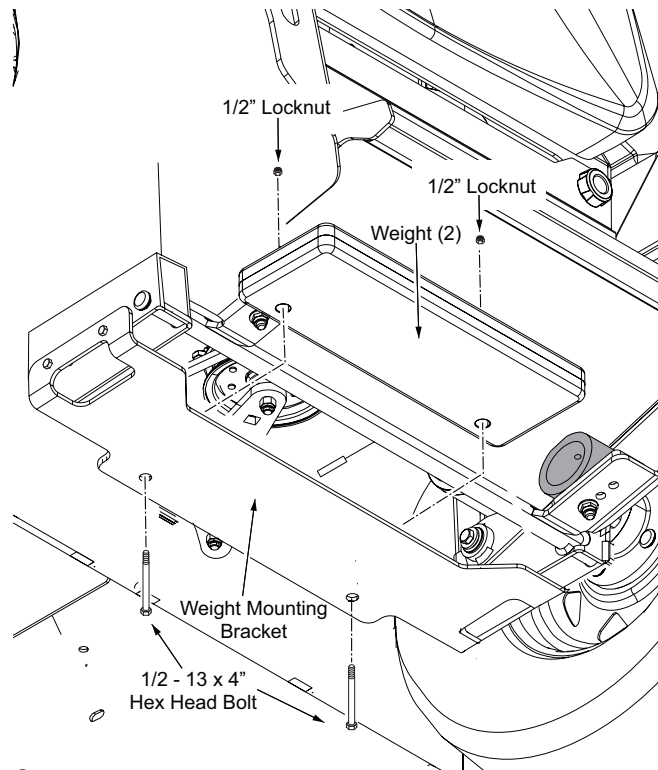


Figure 4.