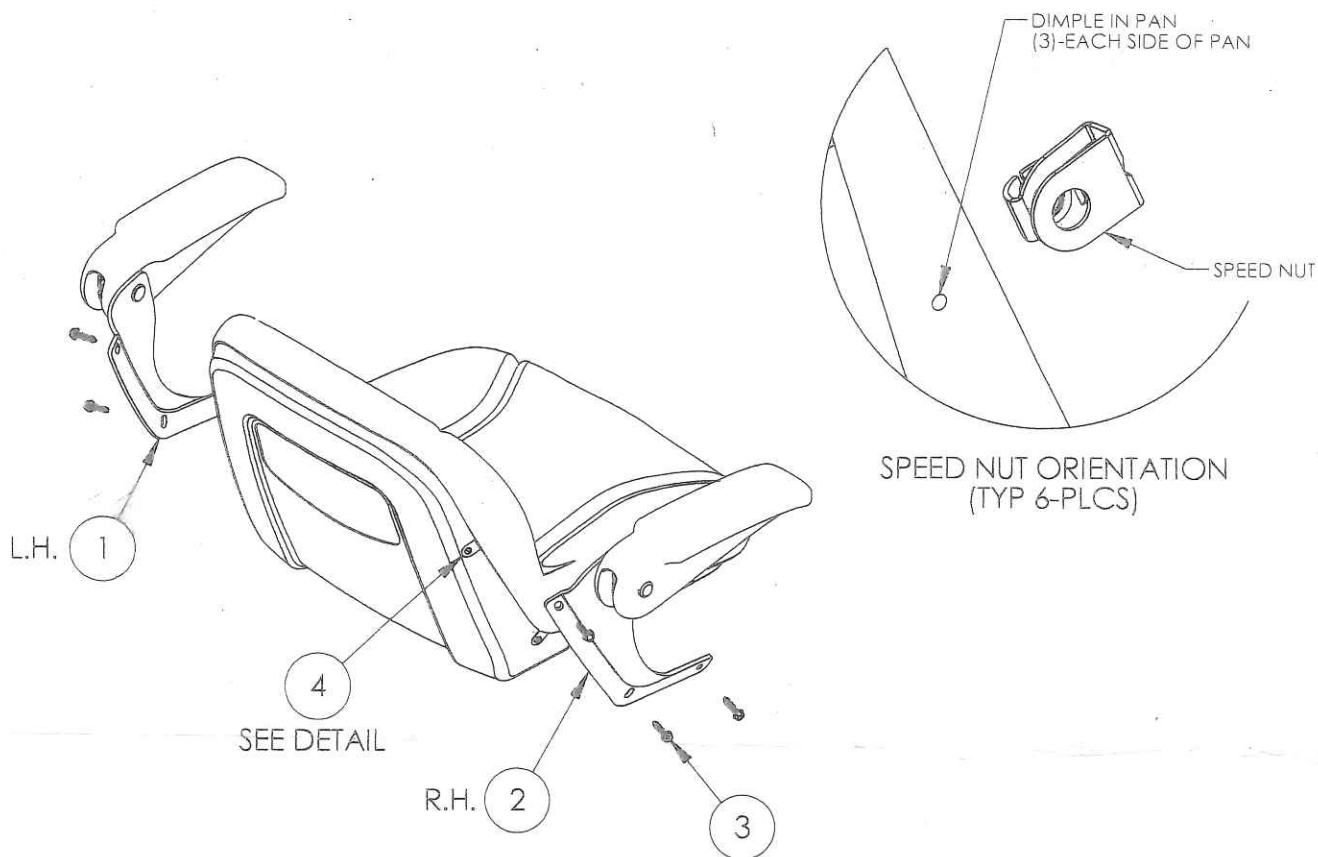


ASSEMBLY INSTRUCTIONS

ARMREST ASSEMBLY KIT



PART LIST - KIT MAY INCLUDE BOTH L.H. AND R.H. - OR ONLY ONE SIDE

ITEM	QTY.	DESCRIPTION
1.	1	L.H. ARMREST ASSEMBLY
2.	1	R.H. ARMREST ASSEMBLY
3.	6	1/4-14 X 1.0 HX HD TAPPING SCREW
4.	6	SPEED NUTS

1. INSTALL SUPPLIED SPEED NUTS (3) PER SIDE AT DIMPLED LOCATIONS ON SIDES OF SEAT (SEE DETAIL FOR ORIENTATION). NOTE: IN SOME INSTANCES, SPEED NUTS MAY ALREADY BE PRESENT.
2. ALIGN ARMREST ASSEMBLY TO THE (3) SPEED NUTS ON THE SIDE OF THE SEAT AND ATTACH WITH (3) 1/4-14 X 1.0 LONG SCREWS.
3. ADJUST ARM(S) TO DESIRED LOCATION AND TIGHTEN ALL SCREWS TO A TORQUE OF 70 IN-LB.

NOTE: DO NOT OVER TORQUE MOUNTING HARDWARE

P.N. 19723B.1
DATE: 4/21/20