



# ***OPERATOR'S MANUAL***

## **FABRIC 2-BAG GRASS CATCHER**

**Model: GC-2B**



This manual contains the operating instructions and safety information for your Scag mower accessory. Reading this manual can provide you with assistance in maintenance and adjustment procedures to keep your mower accessory performing to maximum efficiency. The specific models that this book covers are listed on the inside cover. Before operating your machine, please read all the information enclosed.



# WARNING

## **FAILURE TO FOLLOW SAFE OPERATING PRACTICES MAY RESULT IN SERIOUS INJURY OR DEATH.**

- Read this manual completely as well as other manuals that came with your mower.
- DO NOT operate on steep slopes. To check a slope, attempt to back up it (with the cutter deck down). If the machine can back up the slope without the wheels slipping, reduce speed and use extreme caution.
- Under no circumstances should the machine be operated on slopes greater than 15 degrees. ALWAYS FOLLOW OSHA APPROVED OPERATION.
- DO NOT mow on wet grass. Wet grass reduces traction and steering control.
- Keep all shields in place, especially the grass discharge chute.
- Before performing any maintenance or service, stop the machine and remove the spark plug wire and ignition key.
- If a mechanism becomes clogged, stop the engine before cleaning.
- Keep hands, feet and clothing away from power-driven parts.
- Keep others off the mower (only one person at a time)

## **REMEMBER - YOUR MOWER IS ONLY AS SAFE AS THE OPERATOR!**

**HAZARD CONTROL AND ACCIDENT PREVENTION ARE DEPENDENT UPON THE AWARENESS, CONCERN, PRUDENCE, AND PROPER TRAINING OF THE PERSONNEL INVOLVED IN THE OPERATION, TRANSPORT, MAINTENANCE, AND STORAGE OF THE EQUIPMENT.**

This manual covers the operating instructions and illustrated parts list for:		
GC-2B	with a serial number of	M6300001 to M6399999
Always use the entire serial number listed on the serial number tag when referring to this product.		

## GENERAL INFORMATION

### 1.1 INTRODUCTION

This manual has been prepared to provide the information you need to correctly assemble, operate, and maintain this grass catcher. Read it carefully and keep it for future reference.

**THE REPLACEMENT OF ANY PART ON THIS PRODUCT BY OTHER THAN THE MANUFACTURER'S AUTHORIZED REPLACEMENT PART MAY ADVERSELY AFFECT THE PERFORMANCE, DURABILITY OR SAFETY OF THIS PRODUCT.**

**USE OF OTHER THAN ORIGINAL SCAG REPLACEMENT PARTS WILL VOID THE WARRANTY.**

If additional information or service is needed that is not outlined in this manual, please contact your Scag Power Equipment dealer. Scag dealers are trained in the latest service methods and carry a full line of Scag replacement parts.

When ordering parts, always provide the complete model number and serial number of your catcher.

All information provided in this manual is based upon information available at the time of printing. Scag Power Equipment reserves the right to make changes at any time without notice or obligation.

### 1.2 DIRECTION REFERENCE

The "Right" and "Left", "Front" and "Rear" of the machine are referenced from the operator's right and left when seated in the normal operating position and facing the forward travel direction.

### 1.3 SAFETY AND OPERATING INSTRUCTIONS

#### NOTE -

*To avoid personal injury, it is imperative that all safety instructions be observed.*

1. Read this operator's manual and the operator's manual that is supplied with the machine this attachment is used on.

A replacement manual is available from your authorized Scag Service Dealer or by contacting: Scag Power Equipment, Service Department at P.O. Box 152, Mayville, WI 53050. You may also contact us through our website at [www.scag.com](http://www.scag.com). The manual for this grass catcher can be downloaded by using the model and serial number or use the contact form to make your request. Please indicate the complete model and serial number of your Scag product when requesting replacement manuals.



### WARNING

**Do not operate without discharge chute, mulch kit, or entire grass catcher installed.**

2. Before removing the grass bags, disengage the mower, stop the engine and wait for all movement to stop.
3. **ALWAYS** turn the engine **OFF**, remove the key and wait for all movement to stop before servicing or cleaning the mower or the grass catcher.



### DANGER



**ROTATING BLOWER  
BLADES**

**STOP ENGINE BEFORE  
ENTERING CHUTE**

**CONTACT CAN INJURE**

4. Do not modify or alter any component of the grass catcher attachment or mower.
5. Do not allow any passengers to ride on the grass catcher attachment or on the mower.

### 2.1 DISCHARGE CHUTE AND CUTTER BLADE REMOVAL

#### - NOTE -

Use the illustrated parts list as a part number reference when following the assembly instructions.

#### -IMPORTANT-

When installing this grass catcher on a machine, one of the following Installation Kits must be installed for proper performance and operation.

SPZ52 - Installation Kit p/n 901H

SPZ61 - Installation Kit p/n 901J

1. Remove all packaging materials. Lay out the mounting hardware and the catcher assembly parts for easy access. Prepare the work area making sure that it is a clean, safe environment.

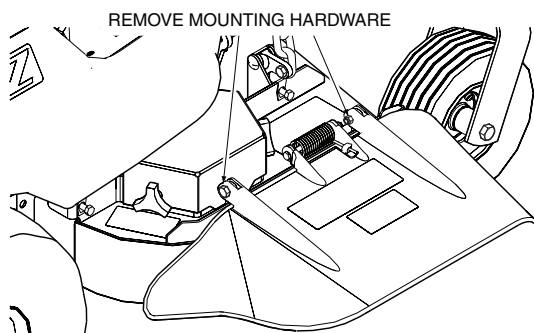
### WARNING

**Do not operate without discharge chute, mulch kit, or entire grass catcher installed.**

2. Remove the discharge chute from the cutter deck. See Figure 2-1.

#### - NOTE -

Do not discard the discharge chute or mounting hardware. The discharge chute **MUST** be reinstalled any time the grass catcher has been removed from the machine.



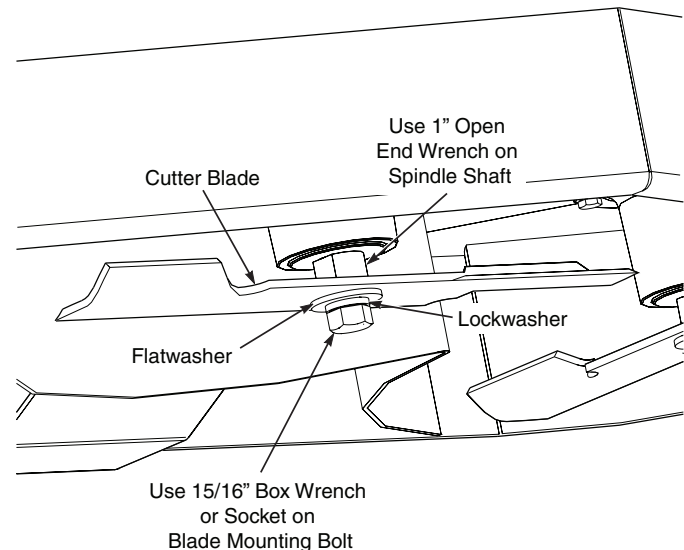
**Figure 2-1. Discharge Chute Removal**

3. Block the rear wheels and apply the parking brake to prevent the machine from moving. Lift the front of machine for easy and safe access to the underside of the cutter deck. Remove the ignition key and disconnect the positive and negative battery cables.

4. Remove the original cutter blades from the cutter deck. To remove the cutter blades from the spindles, install a 1" open-end wrench onto the flats provided on the spindle shaft. This will allow you to hold the spindle in place and prevent it from rotating as you remove the blade mounting bolt (use optional Blade Buddy tool P/N 9212 to assist in securing the cutter blades). Use a 15/16" box wrench or socket to remove the blade mounting bolt. See Figure 2-2. Be sure to retain the bolts, lockwashers and flatwashers as the hardware will be needed to install the cutter blades included with this grass catcher.

### WARNING

**Blades have a sharp edge. Wear proper eye protection and protective gloves or wrap blades with protective material when removing, sharpening and installing.**



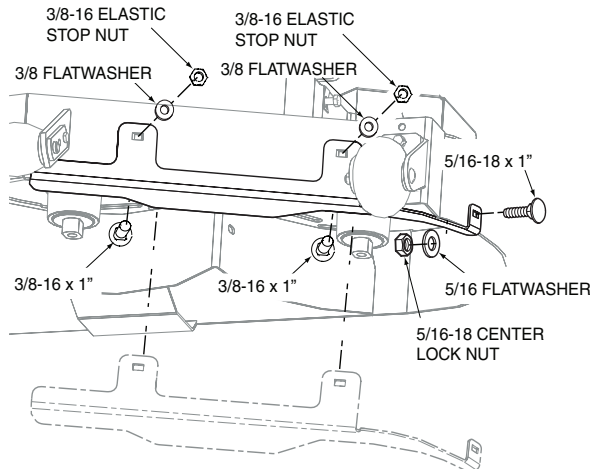
**Figure 2-2. Cutter Blade Removal**

#### - NOTE -

Do not discard the original blades. The blades may be reinstalled any time the grass catcher has been removed from the machine.

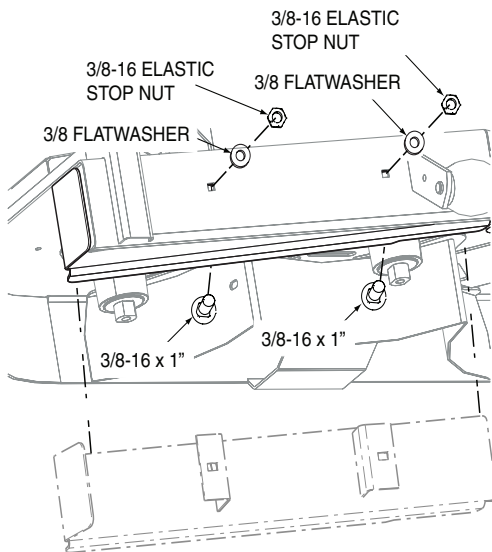
### 2.2 ASSEMBLY INSTRUCTIONS - 52 / 61 CUTTER DECK COMPONENTS

1. Install the left side cutter deck baffle supplied in the grass catcher Installation Kit as shown in Figure 2-3. Secure using (2) 3/8-16 x 1" carriage bolts, (2) 3/8" flatwashers, (2) 3/8-16 elastic stop nuts, (1) 5/16-18 x 1" carriage bolt, (1) 5/16" flatwasher and (1) 5/16-18 center lock nut.



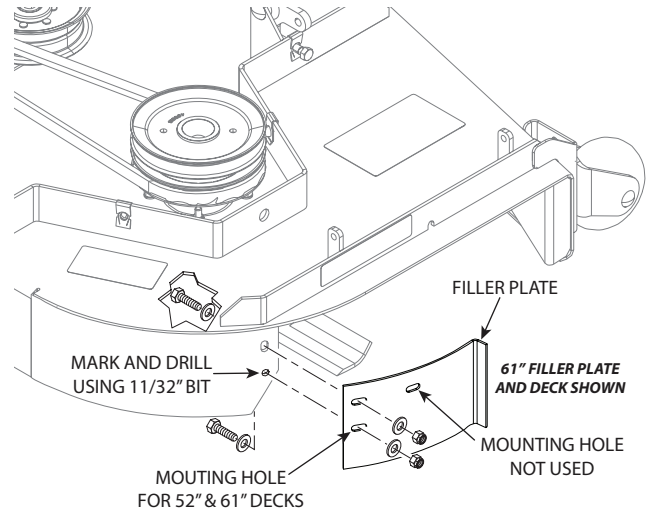
**Figure 2-3. Left Side Deck Baffle Installation**

2. Install the right side cutter deck baffle supplied in the grass catcher Installation Kit as shown in Figure 2-4. Secure using (2) 3/8-16 x 1" carriage bolts, (2) 3/8" flatwashers and (2) 3/8-16 elastic stop nuts.



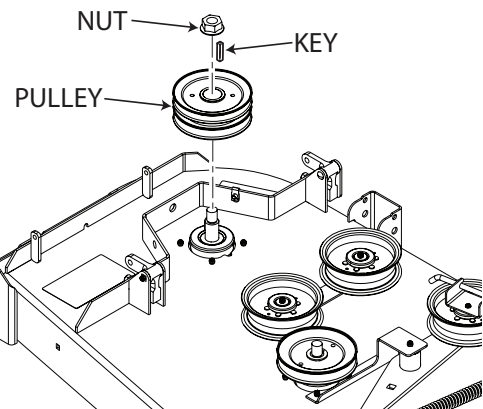
**Figure 2-4. Right Side Deck Baffle Installation**

3. Tighten the hardware.
4. Install the new high lift cutter blades included with the Installation Kit and secure using the hardware removed in Section 2.1, Step 4. Use optional Blade Buddy tool P/N 9212 to assist in securing the cutter blades. Torque the cutter blade mounting bolt to 75 ft/lbs.
5. Install the filler plate and secure using (1) 5/16-18 x 1" bolt, (2) 5/16 flatwashers and (1) 5/16-18 elastic stop nut. See Figure 2-5.
6. Mark and drill the lower hole using an 11/32" drill bit. See Figure 2-5. Secure using (1) 5/16-18 x 1" bolt, (2) 5/16 flatwashers and (1) 5/16-18 elastic stop nut.



**Figure 2-5. Filler Plate Installation**

7. Tighten the hardware and lower the machine.
8. Remove the right side belt cover. Do not discard as the belt cover will need to be reused if the grass catcher is completely removed.
9. Release the tension on the cutter deck drive belt and remove the belt from the right side spindle.
10. Remove the pulley from the spindle by removing the large nut on top.
11. Install the grass catcher pulley onto the spindle assembly and secure. See Figure 2-6.

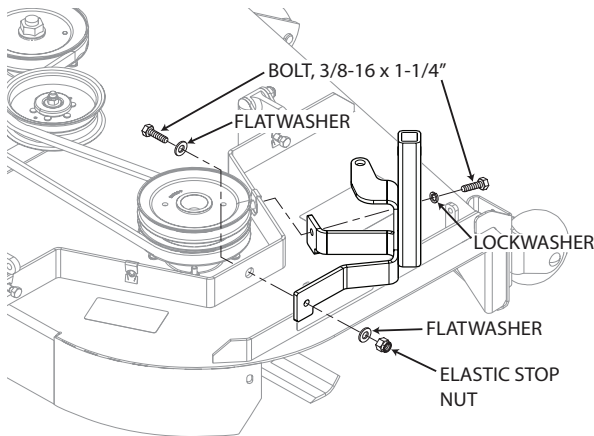


**Figure 2-6. Install Grass Catcher Spindle Pulley**

12. Reinstall the cutter deck belt using the bottom groove on the grass catcher pulley.
13. Install the blower mounting post to the deck using (2) 3/8-16 x 1-1/4" hex head bolts (p/n 04001-32), (2) 3/8" flatwashers (p/n 04041-07), (1) 3/8-16 elastic stop nuts (p/n 04021-09) and (1) 3/8" lock washer. Do not fully tighten the hardware at this time. See Figure 2-7 for hardware location.

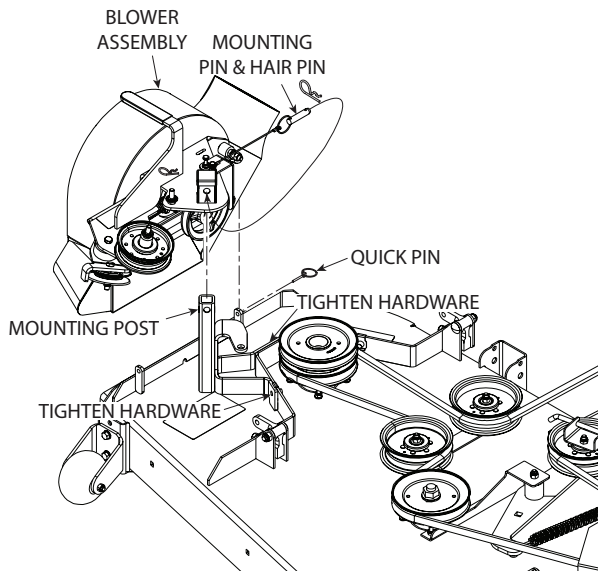
**-NOTE-**

52 Blower mounting post shown below for reference.



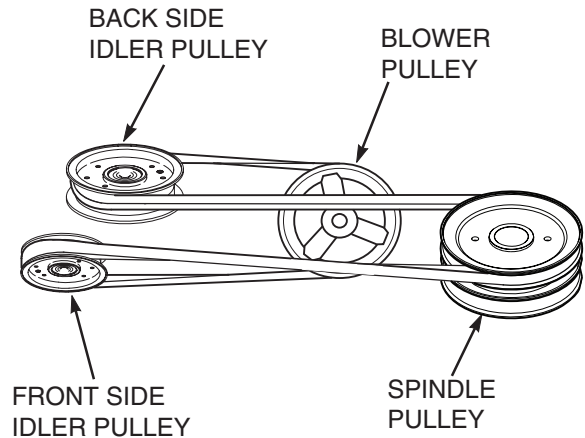
**Figure 2-7. Blower Mounting Post Installation**

14. Install the blower assembly to the mounting bracket and secure with the mounting pin and hair pin. See Figure 2-8.
15. Align the blower assembly with the discharge opening of the cutter deck. Tighten the hardware for the mounting bracket. See Figure 2-8.
16. Install the quick pin through the rear hole in the discharge chute mounting bracket. See Figure 2-8.



**Figure 2-8. Blower Installation**

17. Install the belt to the spindle pulley. When replacing the belt. See Figure 2-9.

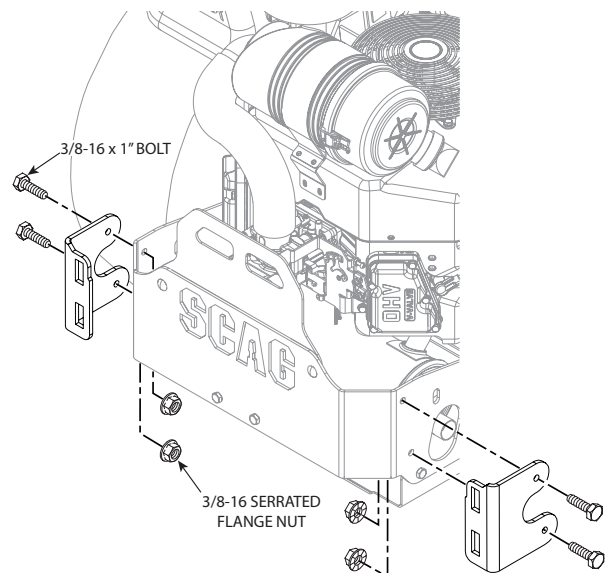


**Figure 2-9. Belt Routing**

18. Install the new belt covers supplied and secure. See items number 5 and number 14 identified on the appropriate Blower Mounting Components page 18 of the illustrated parts section provided in this manual for proper installation.

### 2.3 ASSEMBLY INSTRUCTIONS - DISCHARGE AND HOPPER COMPONENTS

1. Install the left and right side grass catcher mounting brackets to the rear of the machine. Secure using (4) 3/8-16 x 1" hex head bolts and (4) 3/8-16 serrated flange nuts. See Figure 2-10.

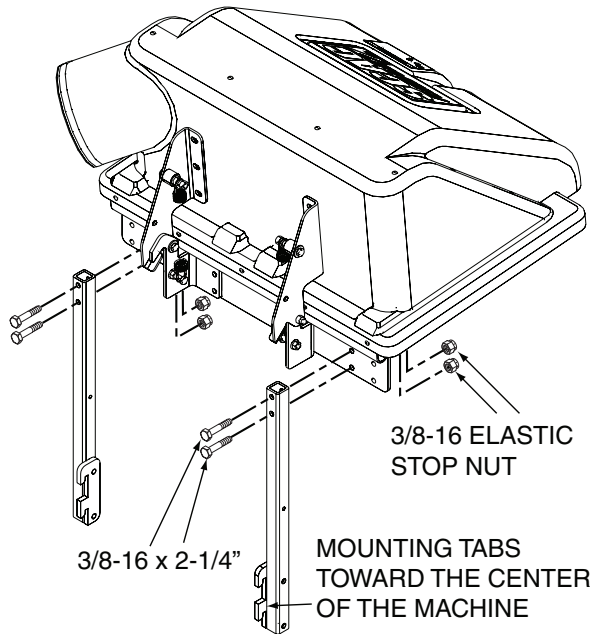


**Figure 2-10. GC Mounting Bracket Installation**

2. Tighten the hardware.

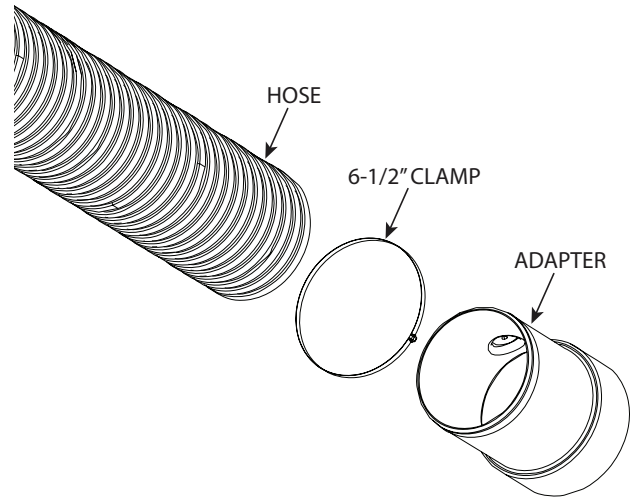


3. Install the left and right side upright mounting tubes to the grass catcher hood assembly. Secure using (4) 3/8-16 x 2-1/4" hex head bolts and (4) 3/8-16 elastic stop nuts. See Figure 2-11.



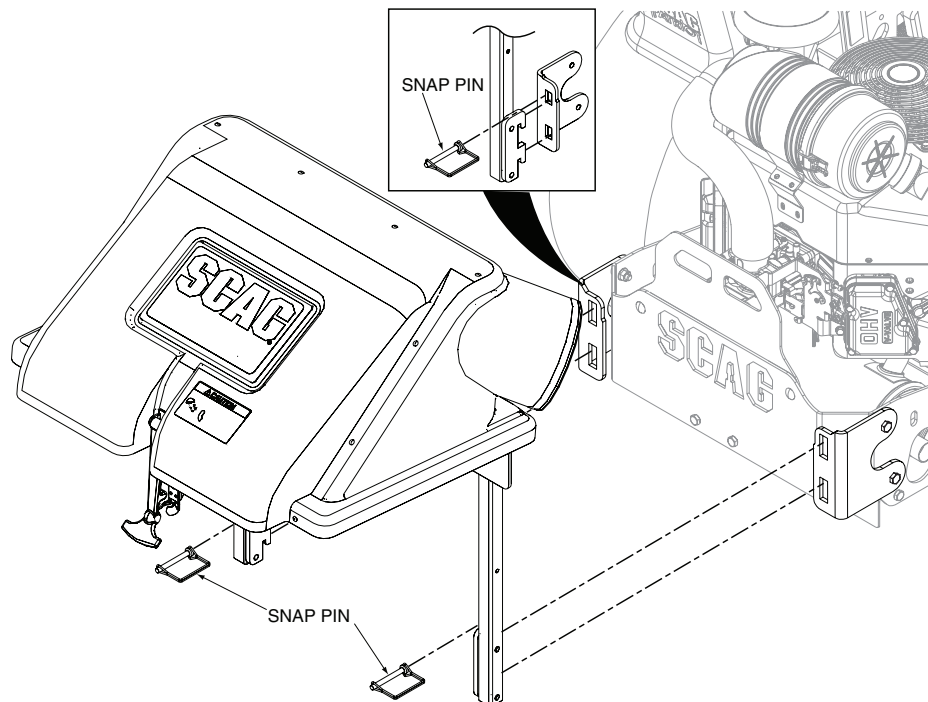
**Figure 2-11. Up Tube Installation**

4. Install the adapter to the hose and secure with (1) 6-1/2" clamp included with this grass catcher. See Figure 2-12.



**Figure 2-12. Hose to Adapter Installation**

5. With help from an assistant, install the grass catcher hood assembly onto the grass catcher mounting brackets installed on the machine in Step 1. See Figure 2-13. Secure with the (2) snap pins included with this grass catcher.



**Figure 2-13. SPZ Assembly Installation**

6. Install the hose to the hood assembly and secure with (1) 6-1/2" clamp included with this grass catcher. See Figure 2-14.

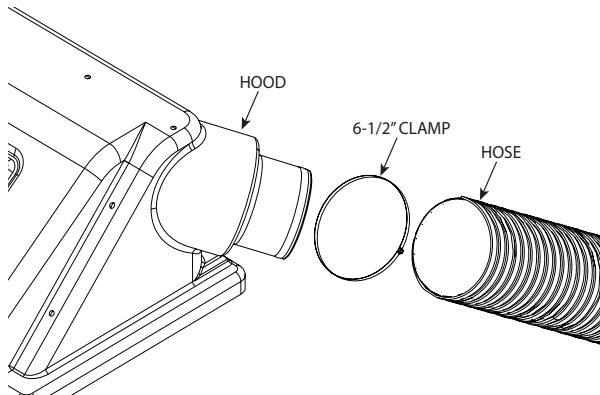
**-NOTE-**

*When installing this catcher the discharge hose may need to be shortened. Follow the steps below when required.*

Lower the cutter deck on the machine to the lowest cutting height.

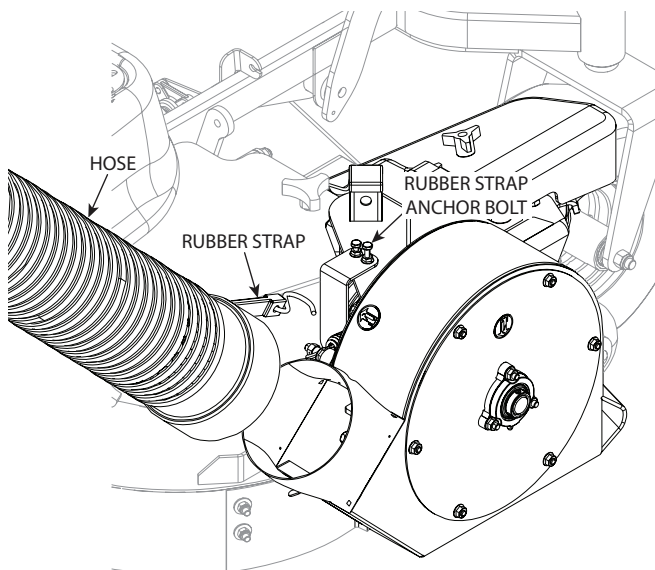
If required, shorten the hose assembly before securing it to the hood assembly. Route the hose up to the hood assembly and mark the hose length required which will not allow the hose to "sag" or "droop".

Cut the hose to the required length.



**Figure 2-14. Hose Installation**

7. Install the hose and adapter assembly to the blower assembly installed on the cutter deck. Secure with the rubber strap. See Figure 2-15.



**Figure 2-15. Hose and Adapter to Chute Installation**

### 2.4 ASSEMBLY INSTRUCTIONS - FRONT WEIGHT COMPONENTS

1. Remove the front (2) serrated flange nuts securing the foot plate to the machine. This will allow the foot plate to lift upward and allow the front weight bar to be installed on the machine.
2. Install the front weight support bar to the machine and secure using (2) 1/2-13 x 1-1/4" hex head bolts, (2) 1/2" flatwashers and (2) 1/2-13 serrated flange nuts. See Figure 2-16.
3. Tighten the hardware and re-install the front (2) serrated flange nuts to secure the foot plate to the machine.
4. Install the weight (x1) included with this grass catcher.
5. Lift the hood assembly and install the bag assemblies. Installation of this grass catcher accessory is complete.
6. Reconnect the positive and negative battery cables.
7. Operate and test the machine.



### WARNING

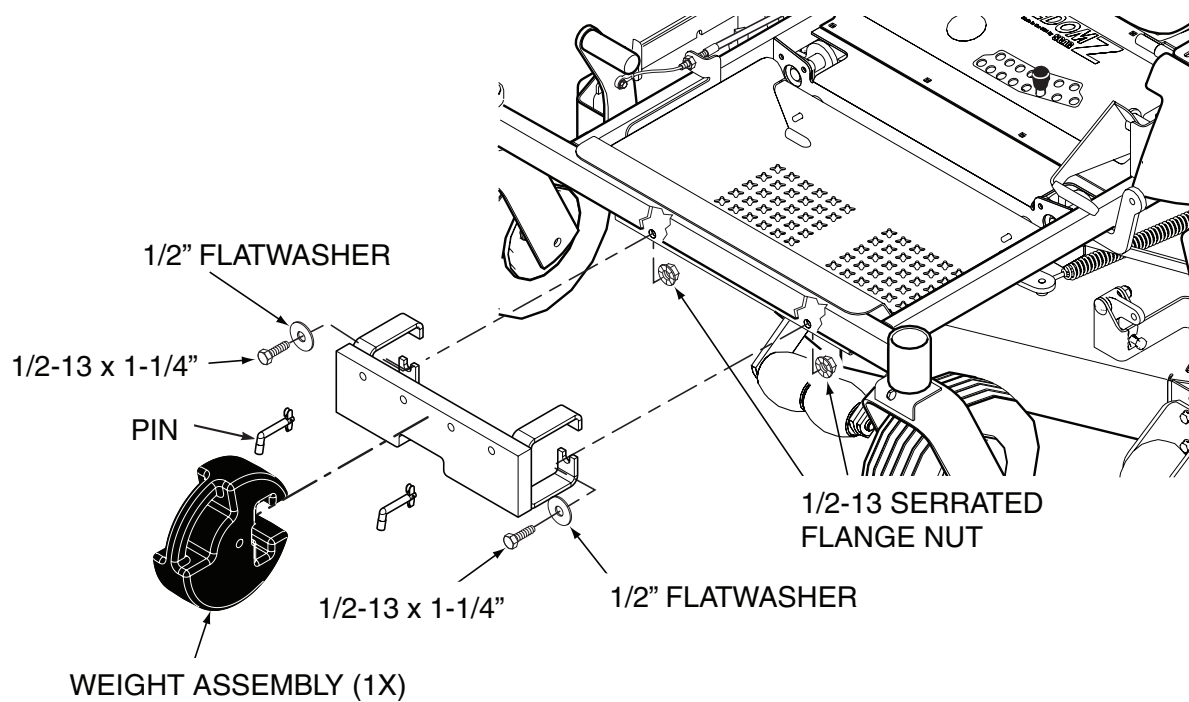
**Do not operate without discharge chute, mulch kit, or entire grass catcher installed.**



### WARNING

**Always turn the engine off, remove the key and wait for all movement to stop before emptying the grass bags or servicing or cleaning the mower or grass catcher.**





**Figure 2-16. SPZ Front Weight Bar Installation**

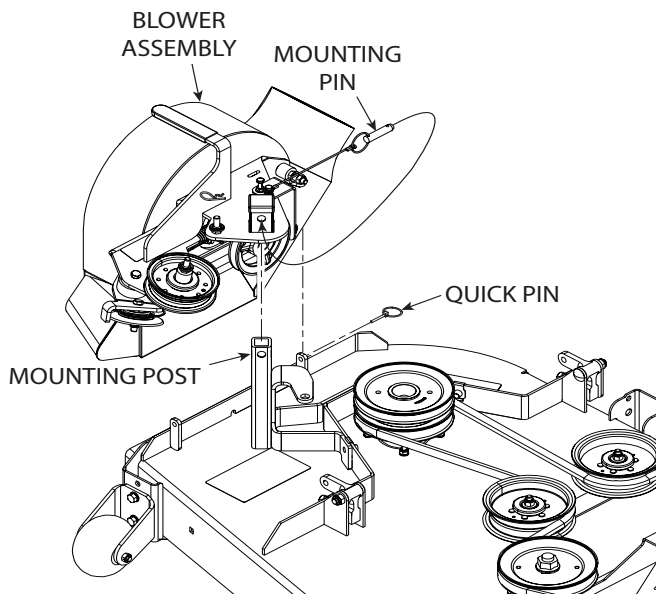
### 3.1 GRASS CATCHER REMOVAL INSTRUCTIONS

Prepare the machine so there is easy and safe access to the work area. Park the machine on a flat, level surface and apply the parking brake. Remove the ignition key and disconnect the positive and negative cables from the battery. Maintain all safety related work procedures. Always wear hand and eye protection.

#### - NOTE -

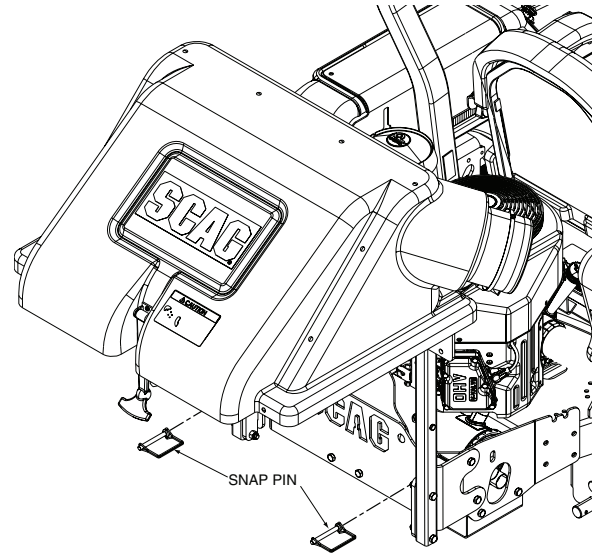
For proper operation and best overall performance and dispersal of grass clippings while side discharging, the grass catcher baffles should be removed.

1. Remove the rubber strap holding the adapter to the blower assembly and the large quick pin securing the blower to the discharge mounting bracket.
2. Remove the belt, pin, hair pin and large quick pin securing the blower assembly to the cutter deck and remove the blower assembly. See Figure 3-1.



**Figure 3-1. Removing the Blower Assembly**

3. Remove the (2) snap pins holding the hood assembly to the mounting brackets on the rear of the machine. See Figure 3-2.
4. With help from an assistant, remove the hopper assembly.

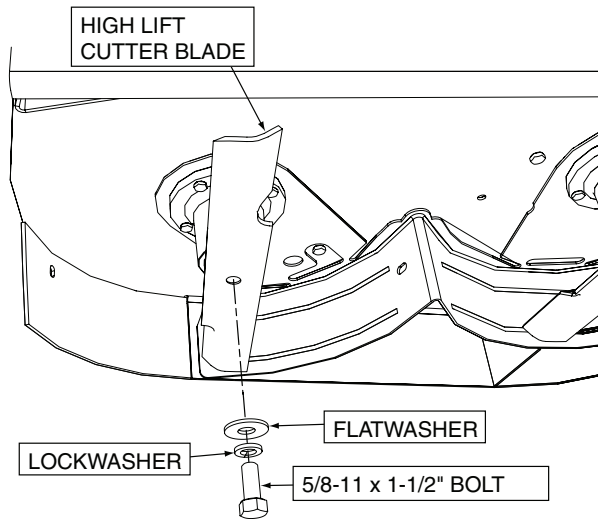


**Figure 3-2. Removing the Hopper Assembly**

5. Remove the high lift cutter blades from the cutter deck. To remove the cutter blades from the spindles, install a 1" open-end wrench on to the flats provided on the spindle shaft (use optional Blade Buddy tool P/N 9212 to assist in securing the cutter blades). This will allow you to hold the spindle in place and prevent it from rotating as you remove the blade mounting bolt. Use a 15/16" box wrench or socket to remove the blade mounting bolt. See Figure 3-3. Be sure to retain the bolts, lockwashers and flatwashers as the hardware will be needed to install the cutter blades included with this grass catcher.

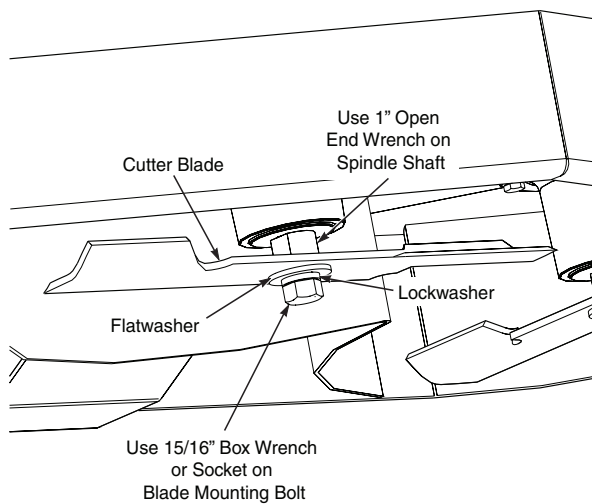
## WARNING

Blades have a sharp edge. Wear proper eye protection and protective gloves or wrap blades with protective material when removing, sharpening and installing.



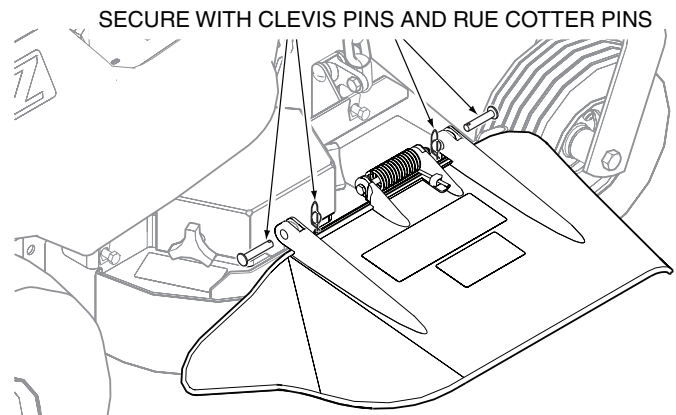
**Figure 3-3. Remove High Lift Blades**

6. Re-install the original cutter blades that were removed when installing this grass catcher and secure using the hardware removed. See Figure 3-4. Use optional Blade Buddy tool P/N 9212 to assist in securing the cutter blades. Torque cutter blade mounting hardware to 75 ft/lbs.



**Figure 3-4. Cutter Blade Installation**

7. Re-install the cutter deck discharge chute and secure with (2) clevis pins and (2) rue cotter pins included in the grass catcher hardware kit. See Figure 3-5.



**Figure 3-5. Reinstalling the Discharge Chute**

8. Lower the machine.
9. Remove the weight from the weight support bar.

**- NOTE -**

The front weight support bar can remain on the machine when the grass catcher is removed.

10. Reconnect the positive and negative cables to the battery cables.
11. Operate and test the machine.



## WARNING

Do not operate without discharge chute, mulch kit, or entire grass catcher installed.

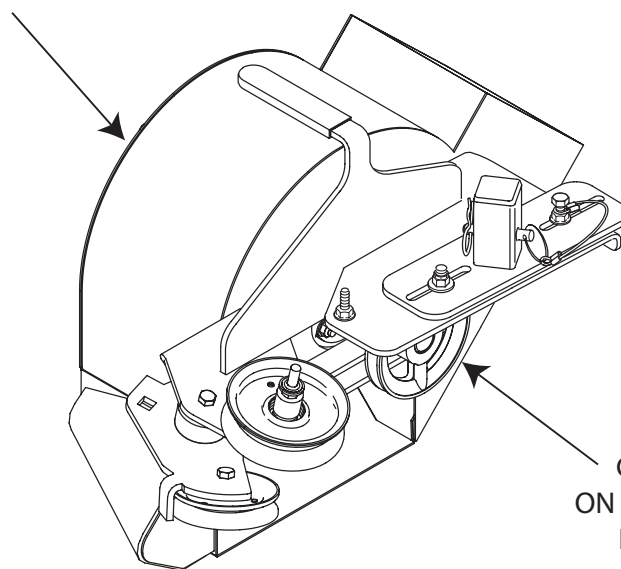
### MAINTENANCE

#### 4.1 MAINTENANCE CHART - RECOMMENDED SERVICE INTERVALS

Break-In (First 10)	HOURS						Procedure	Comments
	8	20	40	100	200	500		
X							Check all hardware for tightness	
X							Inspect hose and adapter	
X							Check belt for proper alignment	
X							Inspect fabric bags	
	X						*Check screen in hopper	Remove debris from screen
	X						Inspect hose and adapter	
	X						Inspect fabric bags	
	X						Check condition of blower	
	X						*Apply grease to blower bearings	See figure below
		X					Check belt for proper alignment	

\* Perform these maintenance procedures more frequently under extreme dusty or dirty conditions.

GREASE FITTING  
ON BEARING HOUSING



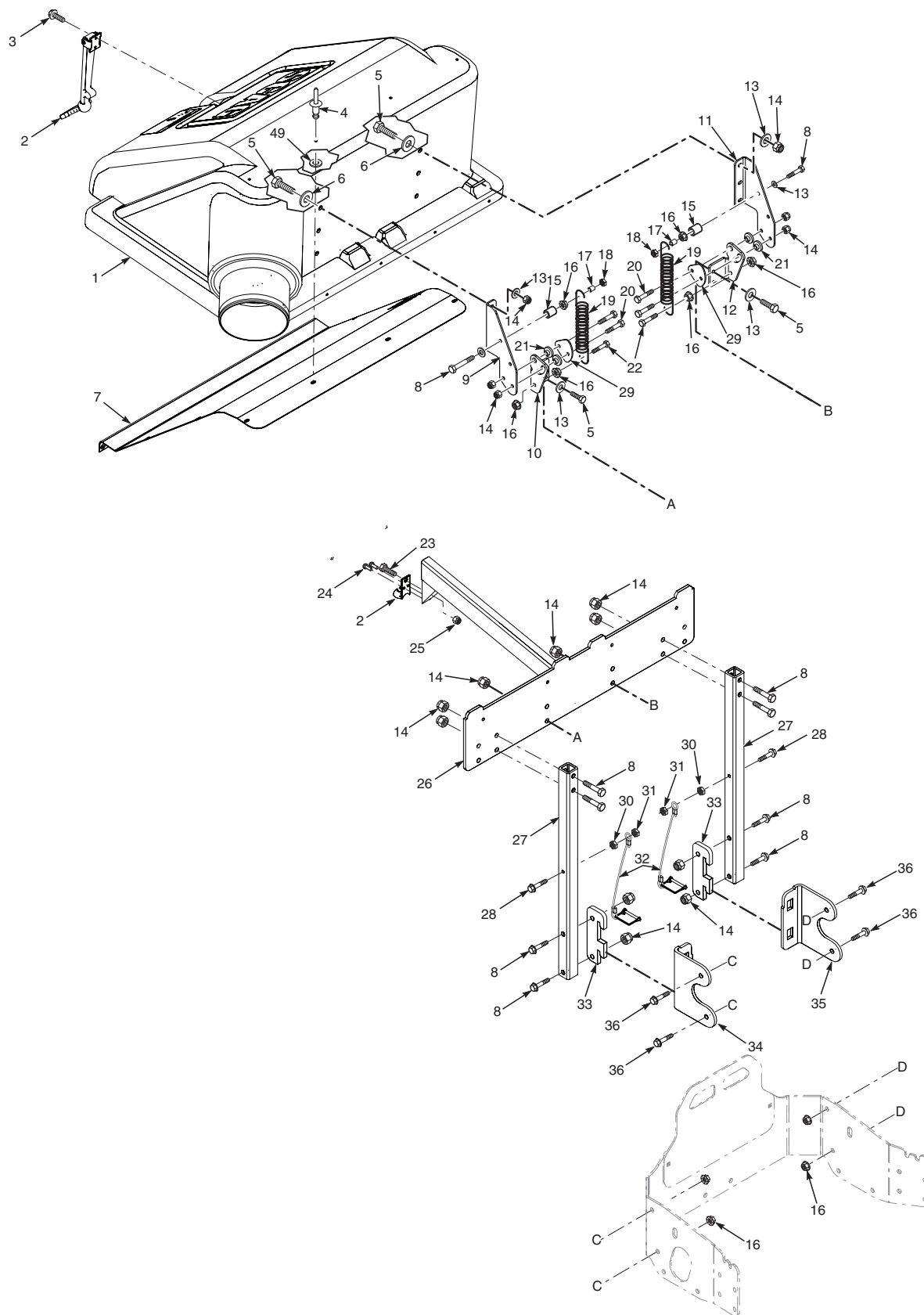
GREASE FITTING  
ON BEARING HOUSING  
BEHIND PULLEY

## **ILLUSTRATED PARTS LIST**

### **5.1 SCAG APPROVED ATTACHMENTS AND ACCESSORIES.**

Attachments and accessories manufactured by companies other than Scag Power Equipment are not approved for use on this machine.

### GC-2B HOOD AND DISCHARGE ASSEMBLY



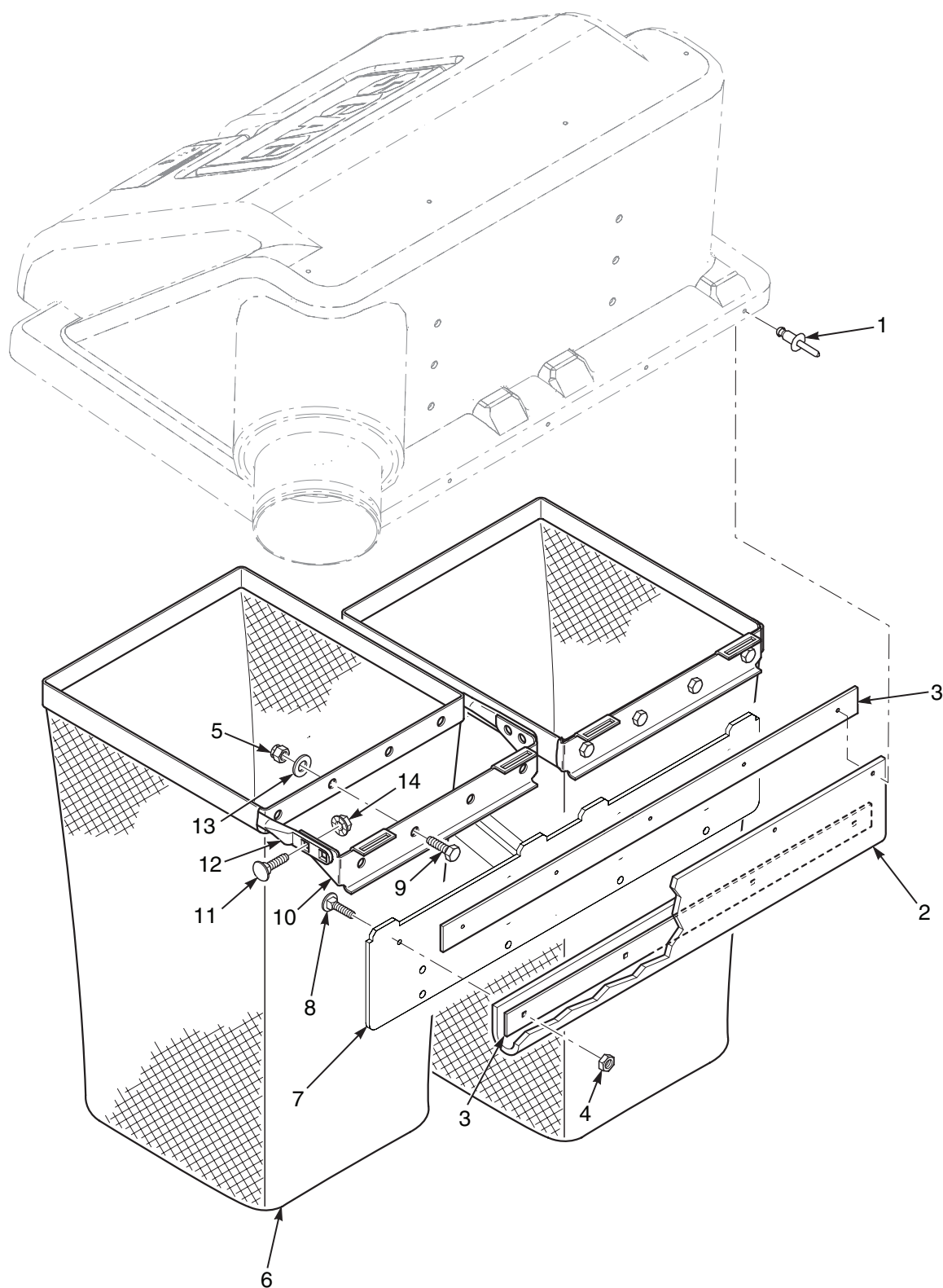


## GC-2B HOOD AND DISCHARGE ASSEMBLY

	Part No.	Description
1	462932	Hood Assembly (incl. screen & seal)
2	482409	Latch
3	04010-25	Screw, #10-32 x 3/4"
	04041-09	Flatwasher, 3/8-.193 x .496 x .048
	04021-01	Nut, Elastic Stop #10-32
4	04090-02	Pop Rivet, 3/16 x .652
5	04001-32	Bolt, Hex Head 3/8-16 x 1-1/4"
6	04041-11	Flatwasher, 3/8-.406 x 1.5 x 7 Ga.
7	424731	Screen, GC Hood
8	04001-46	Bolt, Hex Head 3/8-16 x 2-1/4"
9	425831	Hinge, Upper RH
10	425829	Hinge, Lower RH
11	425830	Hinge, Upper LH
12	425828	Hinge, Lower LH
13	04041-01	Flatwasher, 3/8-.391 x .938 x .105
14	04021-09	Nut, Elastic Stop 3/8-16
15	43277	Spacer
16	04019-04	Nut, Serrated Flange 3/8-16
17	43212	Sleeve
18	04021-05	Nut, Center Lock 3/8-16
19	482304	Spring
20	04001-20	Bolt, Hex Head 3/8-16 x 1-1/2"

	Part No.	Description
21	43546	Bushing, Hopper Pivot
22	04001-135	Bolt, Hex Head 3/8-16 x 1-3/4"
23	04001-08	Bolt, Hex Head 5/16-18 x 3/4"
24	04090-03	Pop Rivet, 3/16 x .402
25	04021-10	Nut, Elastic Stop 5/16-18
26	451959	Frame Weldment, Bag Support
27	424750	Tube, Grass Catcher Mount
28	04001-03	Bolt, Hex Head 1/4-20 x 2"
29	425832	Guard, Hinge
30	04019-02	Nut, Serrated Flange 1/4-20
31	04021-02	Nut, Center Lock 1/4-20
32	485859	Snap Pin Assembly
33	424752	Latch, GC
34	424751	Bracket, GC Mount RH
35	424749	Bracket, GC Mount LH
36	04001-19	Bolt, Hex Head 3/8-16 x 1"
37	04041-19	Flatwasher, 3/16-.196 x .469 x .048

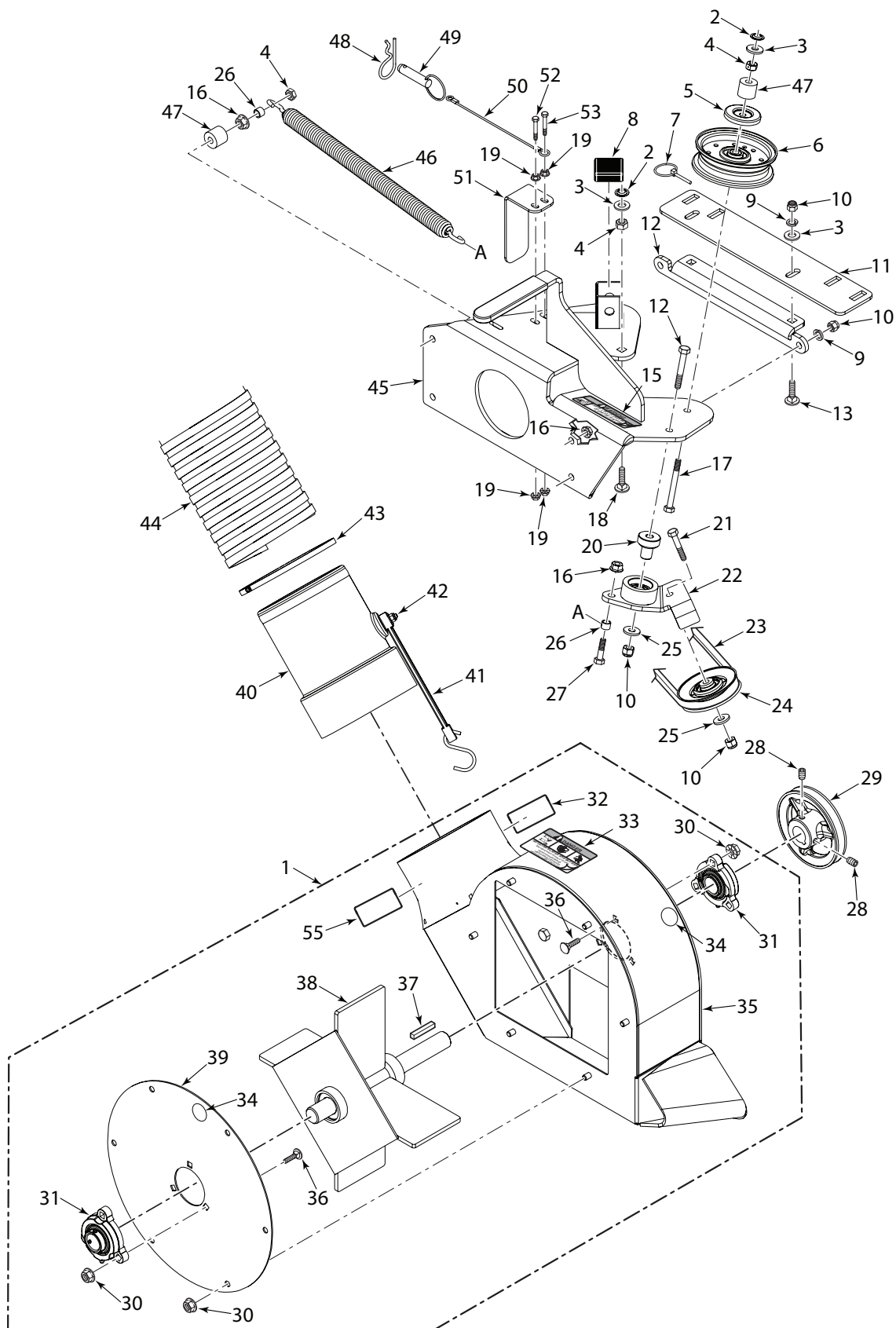
### GC-2B BAG SUPPORT COMPONENTS



**GC-2B BAG SUPPORT COMPONENTS**

Ref. No.	Part No.	Description
1	04090-02	Pop Rivet, 3/16 x .652
2	483589	Seal, GC Hood
3	424753	Retainer, Seal
4	04021-02	Nut, Center Lock 1/4-20
5	04021-10	Nut, Elastic Stop 5/16-18
6	482567	Bag Assembly
7	451959	Frame Weldment, Bag Support
8	04001-01	Bolt, Hex Head 1/4-20 x 3/4"
9	04001-08	Bolt, Hex Head 5/16-18 x 3/4"
10	423198	Mount, Bag Frame Tube
11	04003-12	Bolt, Carriage 5/16-18 x 3/4"
12	423197	Tube, Bag Support
13	04040-15	Flatwasher, 5/16-.375 x .875 x .083
14	04019-03	Nut, Serrated Flange 5/16-18

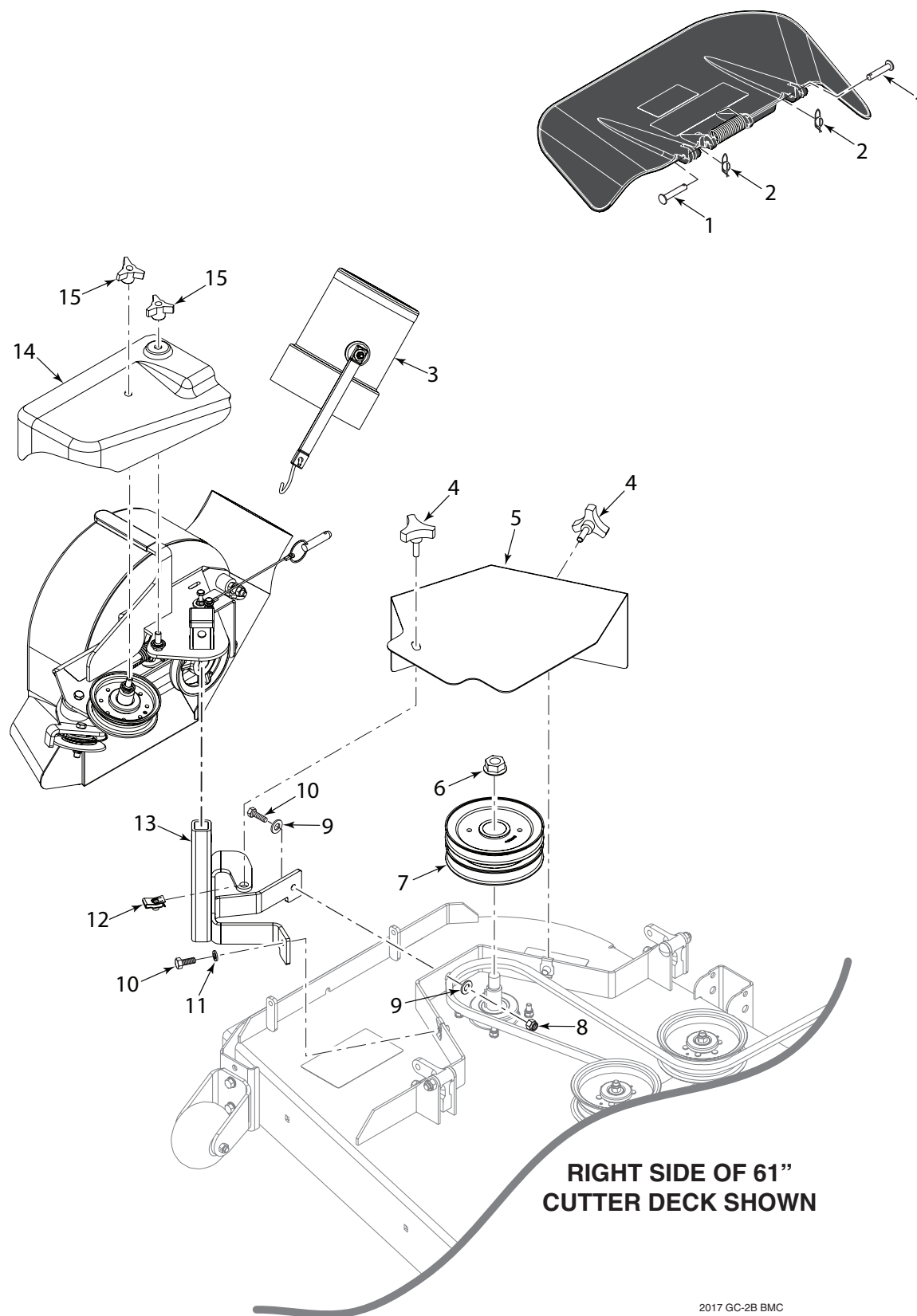
### SPZ 52"/61" BLOWER HOUSING ASSEMBLY



## SPZ 52"/61" BLOWER HOUSING ASSEMBLY

Ref. No.	Part No.	Description
1	461778	Blowing Housing Assembly w/Fan
2	04024-02	Nut, Push-On
3	04041-07	Flatwasher, 3/8-.391 x .938 x .105
4	04021-05	Nut, Center Lock 3/8-16
5	424367	Dust Shield
6	483209	Pulley, 4" Idler
7	04066-04	Quick Pin
8	482300	Cap
9	04030-04	Lockwasher, 3/8" Spring
10	04021-09	Nut, Elastic Stop 3/8-16
11	427387	Plate, Blower Catch
12	423296	Plate, Catch Mounting
13	04003-11	Bolt, Carriage 3/8-16 x 1-1/4"
14	04001-46	Bolt, Hex Head 3/8-16 x 2-1/4"
15	483402	Decal, Belt Cover
16	04019-04	Nut, Serrated Flange 3/8-16
17	04001-81	Bolt, Hex Head 3/8-16 x 3-1/2" Full Thread
18	04003-05	Bolt, Carriage 3/8-16 x 1-1/2"
19	04019-02	Nut, Serrated Flange 1/4-20
20	43575	Pivot, Idler
21	04001-45	Bolt, Hex Head 3/8-16 x 2"
22	462931	Idler Arm Assembly (incl. bearings)
	48224	Bearing
23	485829	Belt (52)
	482831	Belt (61)
24	483189	Pulley, 3-1/2" V-Groove
25	04043-04	Flatwasher, 3/8-.391 x .938 x .105 HD
26	43212	Sleeve
27	04001-168	Bolt, Hex Head 3/8-16 x 1-1/4" Gr. 8
28	04012-04	Set Screw
29	482298	Pulley, 4-3/4" Dia. (incl. #28)
30	04019-03	Nut, Serrated Flange 5/16-18
31	483034	Bearing Assembly
32	483392	Decal, Blower
33	483391	Decal, Danger
34	484696	Decal, Grease Point
35	461342	Blower Housing Weldment w/Decals
36	04003-04	Bolt, Carriage 5/16-18 x 1"
37	04063-06	Key, 1/4 x 1/4 x 1-1/2"
38	451694	Fan Weldment, Narrow
39	421319	Cover, Blower Housing
40	461387	Adapter w/Strap
41	48137-04	Rubber Strap
42	04001-59	Bolt, Hex Head 1/4-20 x 1-1/4"
	04021-08	Nut, Elastic Stop 1/4-20
	04040-14	Flatwasher, 1/4-.312 x .750 x .065
43	48136-18	Clamp, 6-1/2"
44	48135-12	Hose, 6" x 56"
45	461682	Blower Mounting Frame w/ Decal (incl. #8, 54)
46	481522	Spring
47	43277	Spacer
48	04062-05	Hair Pin
49	04067-10	Pin, Ring
50	481547	Lanyard
51	427331	Belt Cover
52	04001-04	Bolt, Hex Head 1/4-20 X 1-1/2"
53	04001-59	Bolt, Hex Head 1/4-20 x 1-1/4"
54	481428	Grip
55	483393	Decal, Rotating Blades

### SPZ 52"/61" BLOWER MOUNTING COMPONENTS



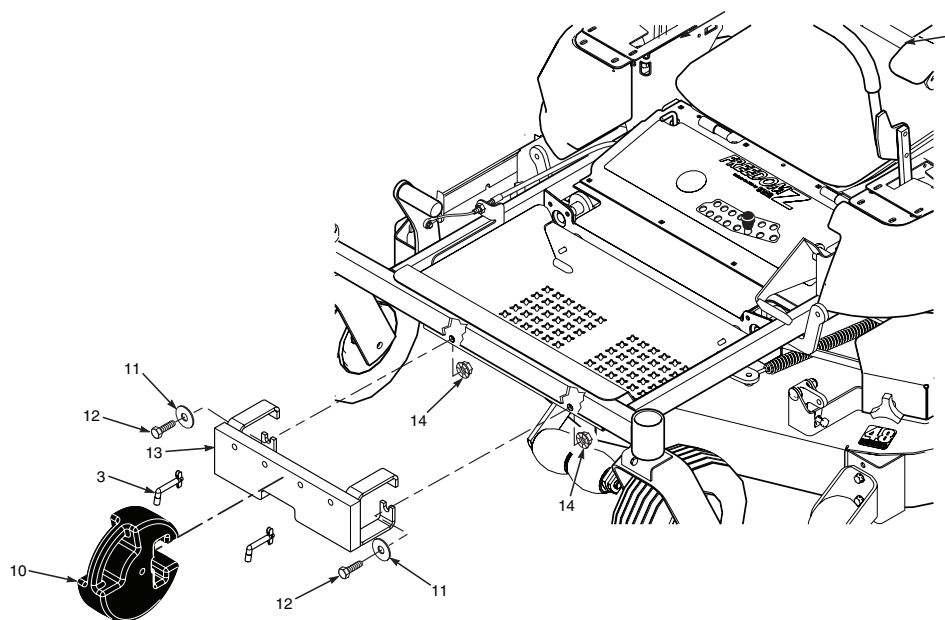
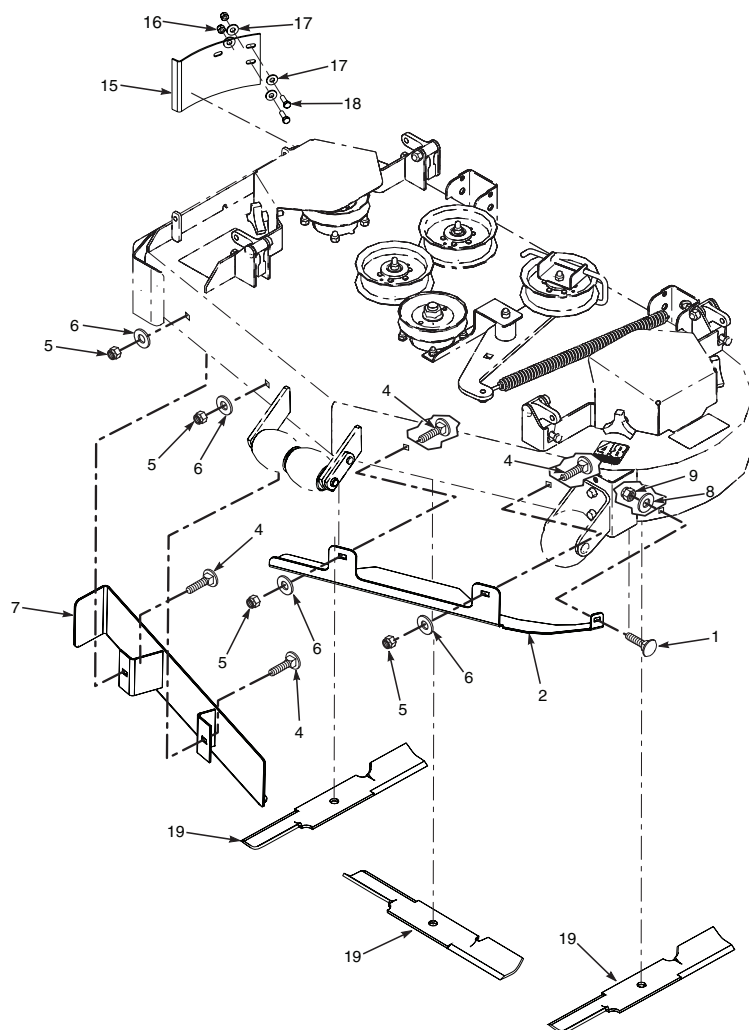
2017 GC-2B BMC



**SPZ 52"/61"**  
**BLOWER MOUNTING COMPONENTS**

Ref. No.	Part No.	Description
1	04064-15	Clevis Pin, 5/16 x 1-1/2"
2	04069-03	Pin, Rue Cotter 5/16"
3	461387	Adapter w/Strap
4	481625-01	Knob w/Stud
5	427345	Belt Cover - 52
	427344	Belt Cover - 61
6	04112-06	Nut, 3/4-16 Spiral Lock
7	485824	Pulley, Double Groove - 52
	485816	Pulley, Double Groove - 61
8	04021-09	Nut, Elastic Stop 3/8-16
9	04041-07	Flatwasher, 3/8-.391 x .938 x .105
10	04001-32	Bolt, Hex Head 3/8-16 x 1-1/4"
11	04030-04	Lockwasher, 3/8" Spring
12	04110-03	U-Nut, 3/8-16
13	462952	Mounting Post Assembly, Blower - 52 (incl. #12)
	462953	Mounting Post Assembly, Blower - 61 (incl. #12)
14	485837	Belt Cover - 52
	485836	Belt Cover - 61
15	04029-04	Wing Nut

## GC-2B CUTTER DECK AND FRONT WEIGHT COMPONENTS



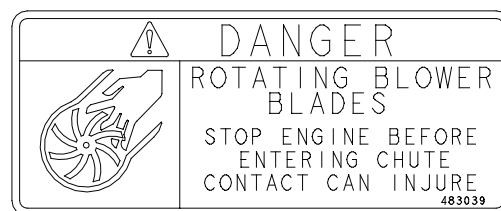
## GC-2B CUTTER DECK AND FRONT WEIGHT COMPONENTS

Ref. No.	Part No.	Description
1	04003-12	Bolt, Carriage 5/16-18 x 3/4"
2	424745	Baffle, LH - 52" Deck
	425267	Baffle, LH - 61" Deck
3	485172	Pin, Weight Retention
4	04003-23	Bolt, Carriage 3/8-16 x 1"
5	04021-09	Nut, Elastic Stop 3/8-16
6	04040-13	Flatwasher, 3/8-.438 x 1.00 x .083
7	451958	Baffle, Weldment, RH - 52" Deck
	452108	Baffle, Weldment, RH - 61" Deck
8	04040-04	Flatwasher, 5/16-.344 x .688 x .065
9	04021-04	Nut, Center Lock 5/16-18
10	484758	Weight Assembly
11	04040-13	Flatwasher, 1/2-.562 x 1.375 x .109
12	04001-70	Bolt, Hex Head 1/2-13 x 1-1/4"
13	452419	Support Weldment, Weight Mounting
14	04019-06	Nut, Serrated Flange 1/2-13
15	427389	Filler Plate - 52
	427337	Filler Plate - 61
16	04021-10	Nut, Center Lock 5/16-18
17	04040-15	Flatwasher, 5/16-.375 x .875 x .083
18	04001-09	Bolt, Hex Head 5/16-18 x 1"
19	481711	Cutter Blade, High Lift (52" Deck)
	481712	Cutter Blade, High Lift (61" Deck)

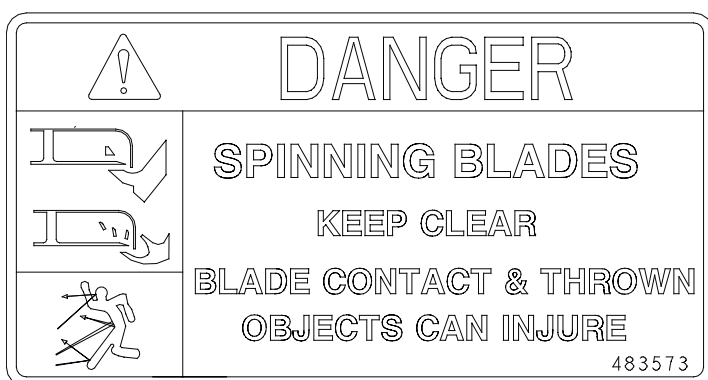
### GC DECALS



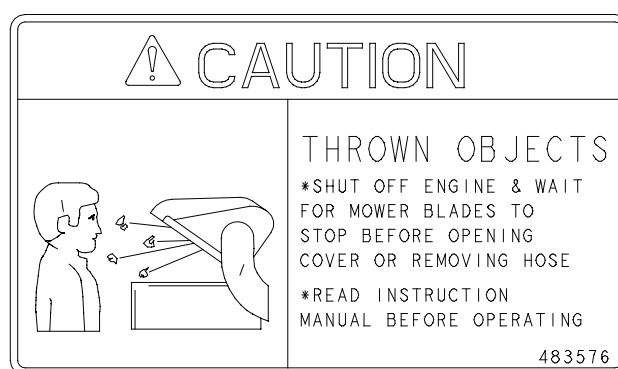
482733



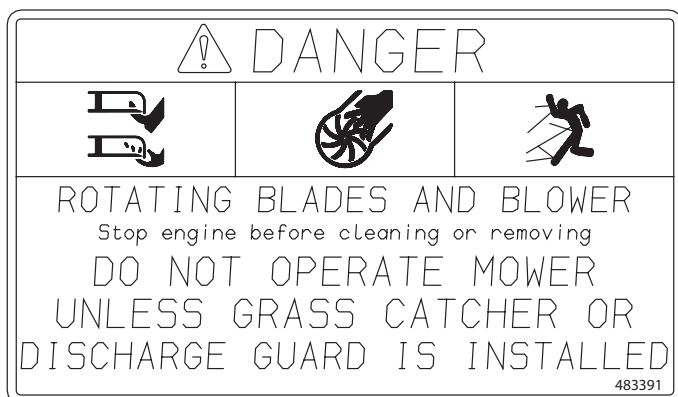
Molded In Decal



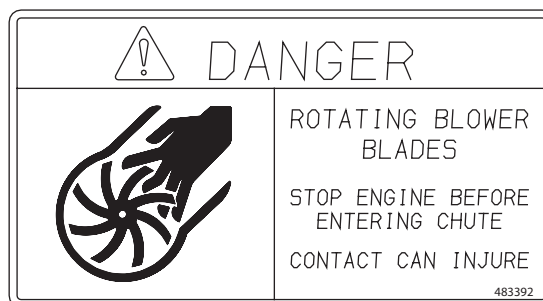
483573



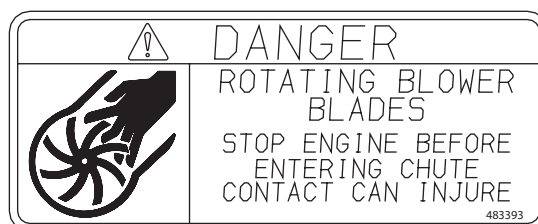
Molded In Decal



483391



483392



483393

# LIMITED WARRANTY- COMMERCIAL ACCESSORY

---

Any part of the Scag commercial accessory manufactured by Scag and found, in the reasonable judgment of Scag, to be defective in material or workmanship, will be repaired or replaced by an Authorized Scag Service Dealer without charge for parts and labor.

The Scag accessory, including any defective part, must be returned to an Authorized Scag Service Dealer within the warranty period. The expense of delivering the accessory to the dealer for warranty work and the expense of returning it back to the owner after repair or replacement will be paid for by the owner. Scag's responsibility in respect to claims is limited to making the required repairs or replacements, and no claim of breach of warranty shall be cause for cancellation or rescission of the contract of sale of any Scag machine. Proof of purchase will be required by the dealer to substantiate any warranty claim. All warranty work must be performed by an Authorized Scag Service Dealer.

This warranty is limited to 90 days from the date of original retail purchase for any Scag accessory that is used for commercial purposes, or any other income-producing purpose including rental use.

The warranty for the grass catcher blower assemblies (excluding the belt) is limited to 1-year from the date of original retail purchase. 90 Days for rental use.

This warranty does not cover any accessory that has been subject to misuse, neglect, negligence, or accident, or that has been operated in any way contrary to the operating instructions as specified in the Operator's Manual. The warranty does not apply to any damage to the accessory that is the result of improper maintenance, or to any accessory or parts that have not been assembled or installed as specified in the Operator's Manual.

The warranty does not cover any accessory that has been altered or modified. In addition, the warranty does not extend to repairs made necessary by normal wear, or by the use of parts or accessories which, in the reasonable judgment of Scag, are either incompatible with the Scag mower or adversely affect its operation, performance or durability. This warranty does not cover engines and electric starters, which are warranted separately by their manufacturer.

Scag Power Equipment reserves the right to change or improve the design of any accessory without assuming any obligation to modify any accessory previously manufactured.

All other implied warranties are limited in duration to the 90 day warranty period. Accordingly, any such implied warranties including merchantability, fitness for a particular purpose, or otherwise, are disclaimed in their entirety after the expiration of the appropriate ninety day warranty period. Scag's obligation under this warranty is strictly and exclusively limited to the repair or replacement of defective parts and Scag does not assume or authorize anyone to assume for them any other obligation. Some states do not allow limitations on how long an implied warranty lasts, so the above limitation may not apply to you.

Scag assumes no responsibility for incidental, consequential or other damages including, but not limited to, expense for gasoline, oil, expense of delivering the machine to an Authorized Scag Service Dealer and expense of returning it back to the owner, mechanic's travel time, telephone or telegram charges, rental of a like product during the time warranty repairs are being performed, travel, loss or damage to personal property, loss of revenue, loss of use of the mower, loss of time, or inconvenience. Some states do not allow the exclusion or limitation of incidental or consequential damages, so the above limitation or exclusion may not apply to you.

This warranty gives you specific legal rights, and you may also have other rights which vary from state to state.